

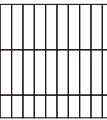
Skybar SGT620 | SGT621

Construction	Multi Level Loop
Tile Size	250 x 1000mm
Yarn Type	FITTON Premium Nylon
Stain/ Soil Resistant	Resistec
Dye Method	100% Solution Dyed
Tufted Face Weight	580gm/m ² (17oz/yd ²) [±5%]
Gauge	1/12
Stitches per inch	10
Tufts	120
Finished Pile Height	3.9mm (0.15") [±5%]
Finished Pile Thickness	2.79mm (0.11") [±5%]
Average Density	5572oz/yd ³
Secondary Backing	Sus-Pac Thermoplastic
Total Thickness	6.8mm (0.267") [±5%]
Total Weight	2,930gm/m ² (86.41oz/yd ²) [±5%]

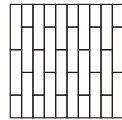
Performance Specifications

Tuft Bind	ASTM D1335 > 8lbs
Hexapod Test	ASTM D5252 > 3.0 at 12,000 cycles
Flammability (Radiant Panel Test)	ASTM E648 ≥ 0.45 (Class I)
Smoke Density	ASTM E662 ≤ 450
Soiling	ASTM D6540
Stain Resistance	AATCC 175
Dimensional Stability	ASTM D7570 < 0.2%
Methenamine Pill Test	ASTM D2859 (Self-Extinguishing)
Colorfastness to Light	(AATCC 16E) ≥ 4.0 at 80 Hours
Colorfastness to Crocking	(AATCC 165) ≥ 4.0 Wet or Dry
Electrostatic Propensity	(AATCC 134) 20% R.H., 70° F. ≤ 3.5 KV
Texture Appearance Retention Rating	(TARR) Commercial End-Use Applications
Indoor Air Quality	CRI Green Label Plus™

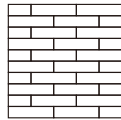
Recommended Installation Method



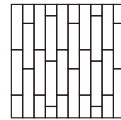
Monolithic



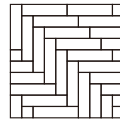
Ashlar



Brick



Stagger

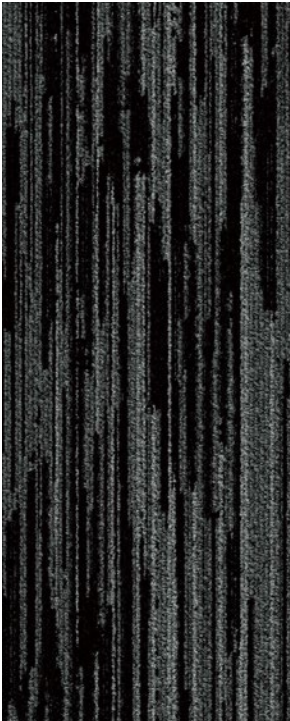


Herringbone



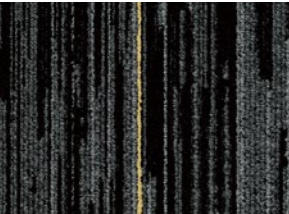
Introducing Sky Bar - simple, subtle linear lines that evoke a sense of luxury and refinement.

Skybar SGT620

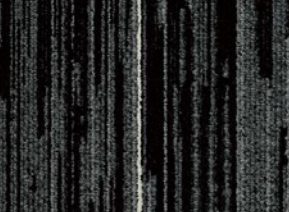


SGT620-60510 Black Asteria

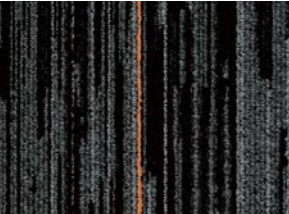
Skybar SGT621



SGT621-71514 Gold Gold Royale

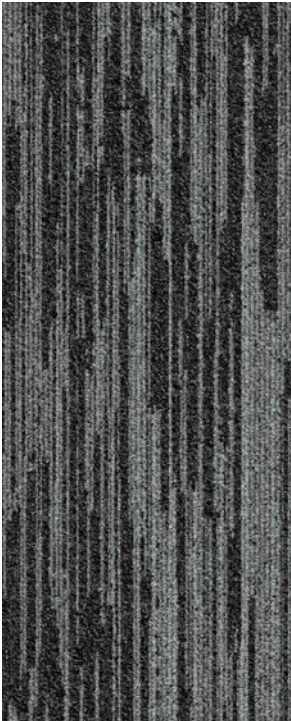


SGT621-71515 Silver Silver Cadillac



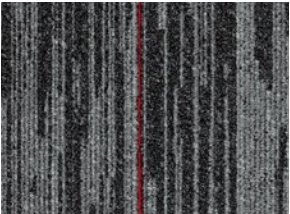
SGT621-71512 Bronze Bronze Adonis

Skybar SGT620

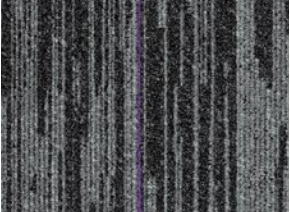


SGT620-60520 D.Grey Hesper

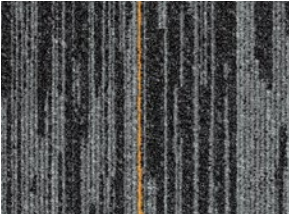
Skybar SGT621



SGT621-71527 Red Singapore Sling



SGT621-71529 Purple Purple Rain



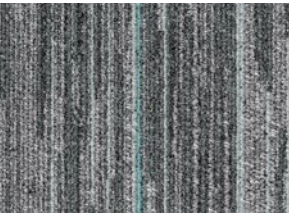
SGT621-71520 Orange Screwdriver

Skybar SGT620

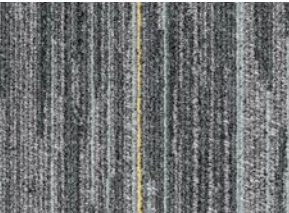


SGT620-60530 M.Grey Luna

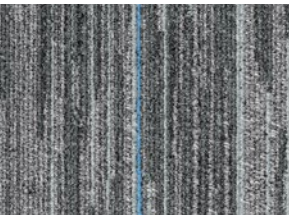
Skybar SGT621



SGT621-71536 Turquoise Snowy River



SGT621-71534 Yellow Prosecco Punch



SGT621-71538 Blue Blue Lagoon

Skybar SGT620

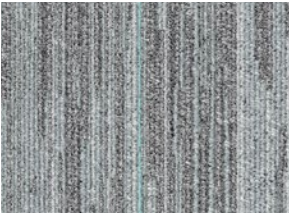


SGT620-60540 L.Grey Talia

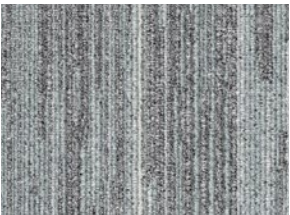
Skybar SGT621



SGT621-71546 Green Midori Sour



SGT621-71548 L.Blue Lagoon Punch



SGT621-71545 Silver Sterling Silver

Bronze Adonis 71512 + Asteria 60510





In design, linear lines are simple, straight, or elongated elements that create a sense of structure, order, and elegance. They can be horizontal, vertical, or diagonal, and are often used in modern architecture and interior design to evoke a sense of simplicity and sophistication.



Vertical lines may echo the towering buildings outside, drawing attention to the height and openness of the space.



Hesper 60520 + Screw Driver 71520





The link between Sky Bar and linear lines lies in the concept of sleek, modern aesthetics and the dynamic, visually striking experiences both elements aim to create.



Sky Bar helps create a stylized,
upscale environment.

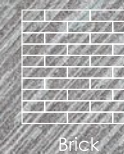


Silver Cadillac 71515 + Hesper 60520 + Luna 60530 + Talia 60540





Lagoon Punch 71548 + Sterling Silver 71545 + Midori Sour 71546



In a tight, efficient layout, Skybar helps
organize the space, guiding the flow of
movement and creating clean,
unobstructed pathways.

