

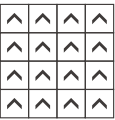
Origami SGT630

Construction	Multi Level Loop
Tile Size	500 x 500mm
Yarn Type	FITTON Premium Nylon
Stain/ Soil Resistant	Resistec
Dye Method	100% Solution Dyed
Tufted Face Weight	610gm/ m² (18oz/yd²) [±5%]
Gauge	1/12
Stitches per inch	11
Tufts	132
Finished Pile Height	3.9mm (0.15") [±5%]
Finished Pile Thickness	2.79mm (0.11") [±5%]
Average Density	5891oz/yd³
Secondary Backing	Sus-Pac Thermoplastic
Total Thickness	6.8mm (0.267") [±5%]
Total Weight	3,000gm/ m²(88.47oz/yd²) [±5%]

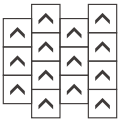
Performance Specifications

Tuft Bind	ASTM D1335 > 8lbs
Hexapod Test	ASTM D5252 > 3.0 at 12,000 cycles
Flammability (Radiant Panel Test)	ASTM E648 ≥ 0.45 (Class I)
Smoke Density	ASTM E662 ≤ 450
Soiling	ASTM D6540
Stain Resistance	AATCC 175
Dimensional Stability	ASTM D7570 < 0.2%
Methenamine Pill Test	ASTM D2859 (Self-Extinguishing)
Colorfastness to Light	(AATCC 16E) ≥ 4.0 at 80 Hours
Colorfastness to Crocking	(AATCC 165) ≥ 4.0 Wet or Dry
Electrostatic Propensity	(AATCC 134) 20% R.H., 70° F. ≤ 3.5 KV
Texture Appearance Retention Rating	(TARR) Commercial End-Use Applications
Indoor Air Quality	CRI Green Label Plus™

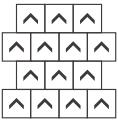
Recommended Installation Method



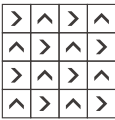
Monolithic



Ashlar



Brick



Quarter Turned



ORIGAMI
折り紙



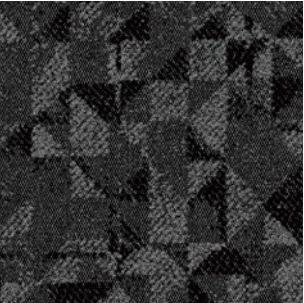
Inspired by the timeless Japanese art of paper folding, we present Origami—a concept that goes beyond simply shaping materials, and into the realm of transformation.

Japanese Origami is a philosophy that reveals beauty hidden in simplicity. At its core, origami is about understanding how the material itself—whether paper or otherwise—responds to form and structure. The way a paper's grain, texture, and thickness interact with each fold speaks to a deeper narrative of transformation, geometry, and balance.

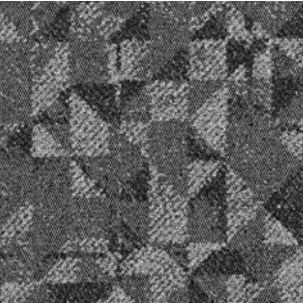


STITCHES
& GAUGE

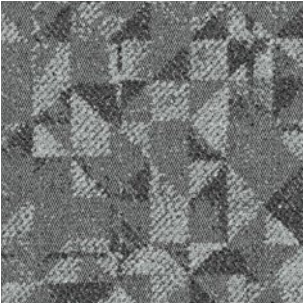
Origami **SGT630**



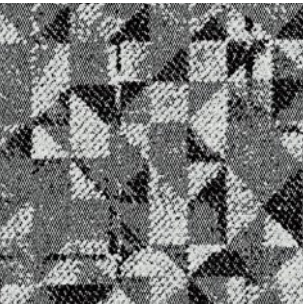
SGT630-72503 Dark grey **Urushi**



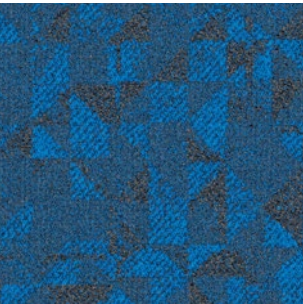
SGT630-72502 Mid grey **Kurogama**



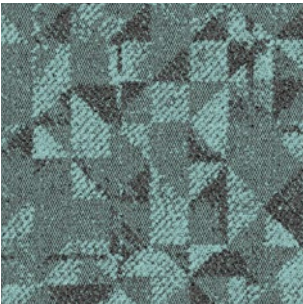
SGT630-72501 Light grey **Kabuto**



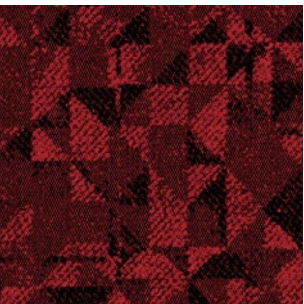
SGT630-72510 Off White **Tsuru**



SGT630-72810 Blue **Aizome**



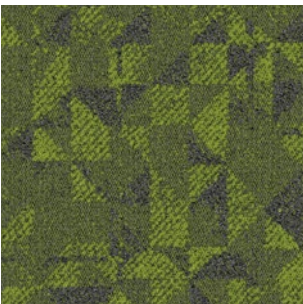
SGT630-72611 Turquoise **Arita Yaki**



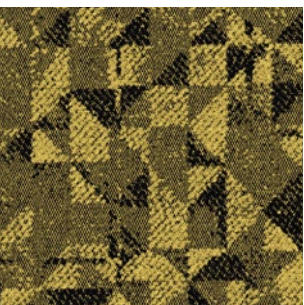
SGT630-72571 Red **Wagasa**



SGT630-72520 Khaki **Haori**



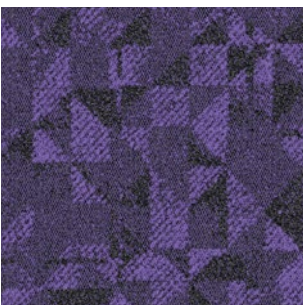
SGT630-72612 Green **Matcha**



SGT630-72540 Yellow **Yukata**



SGT630-72570 Orange-Red **Torii**



SGT630-72911 Purple **Edo Murasaki**

STITCHES
& GAUGE



By capturing the essence of origami,
we've taken the principles of geometry
and precision and applied them to
create a visual experience that
transforms a traditional flat surface into
something dynamic and multifaceted.

A "yukata" (浴衣) is traditionally
more casual than Kimono robes,
made from 100% cotton fabric and
worn especially in summer.



Yukata 72540 + Urushi 72503 + Tsuru 72510



Brick



"Tsuru" (鶴), the Crane, has always been a strong symbol of success and good fortune in Japanese culture. When folded into origami, it is believed that one's "heart's desire" will come true.





Using colors, textures, and shadow play, we've designed a pattern that is not static, but evolves with every shift in light and perspective.



A "haori" (羽織) is a Japanese traditional jacket with a loose fit.



Haori 72520



Brick



Kurogama 72502 + Urushi 72503 + Torii 72570



We invite you to reimagine how Origami can transform your interior, not just as a backdrop, but as a central element that speaks to sophistication, innovation, and a deeper understanding of materiality.



A “torii” (鳥居) is a traditional Japanese gate most commonly found at the entrance of or within a Shinto shrine.



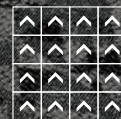
Origami does more than fill a space—it defines it. It invites interaction, drawing the eye and subtly changing with the room's ambiance. It balances the artistic and the functional, creating an environment where design is both a visual and tactile experience.



“Wagasa” (和傘) are Japanese umbrellas.



Wagasa 72571 + Urushi 72503



Monolithic



"Edo murasaki" (江戸紫) translates to "Edo purple" and refers to a specific bluish-purple hue that was particularly popular during the Edo period in Japan.





"Aizome" (藍染め) refers to the Japanese practice of traditional indigo dyeing, a natural technique using the leaves of the Japanese indigo plant (*Persicaria tinctoria*) to create a distinctive blue color.



Kurogama 72502 + Aizome 72810



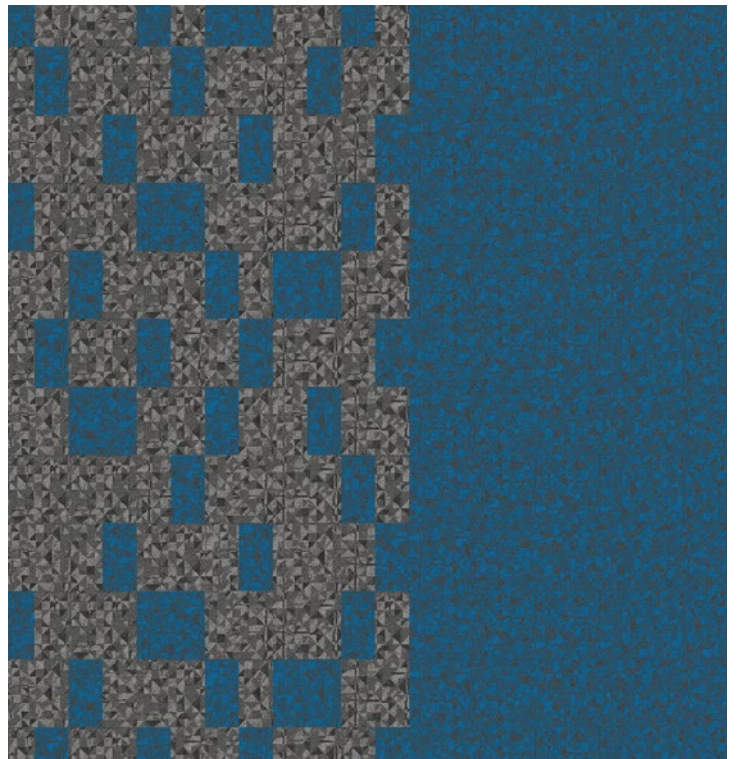
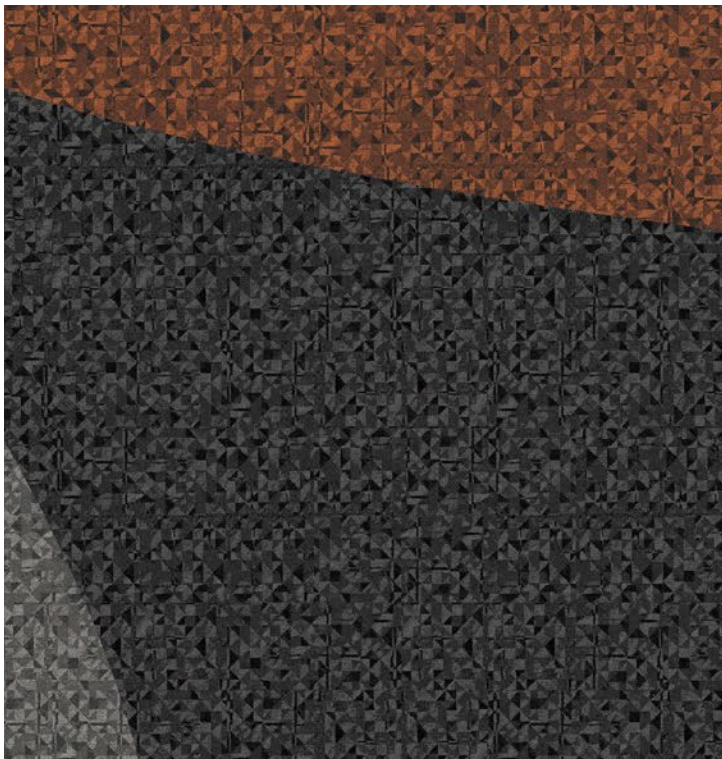
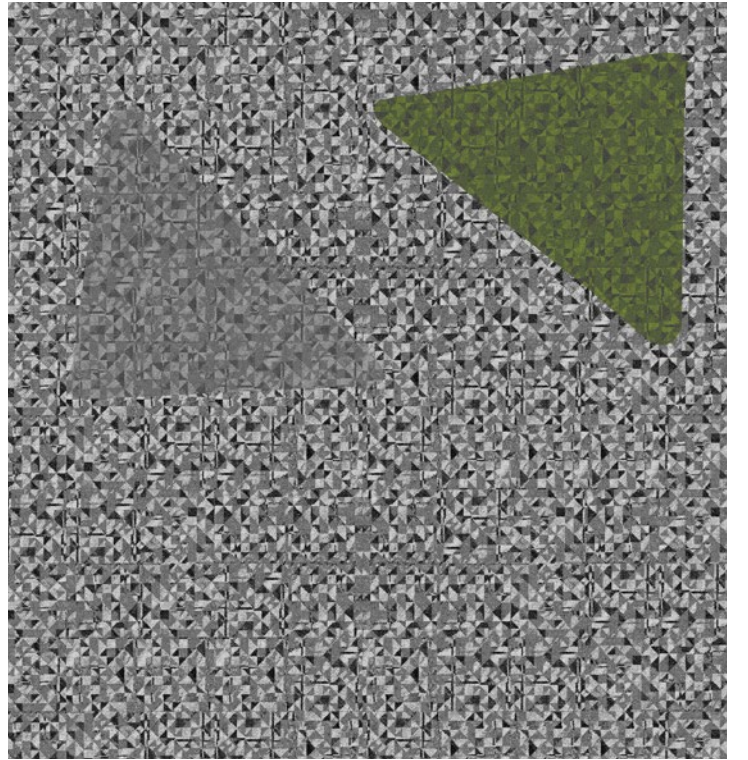
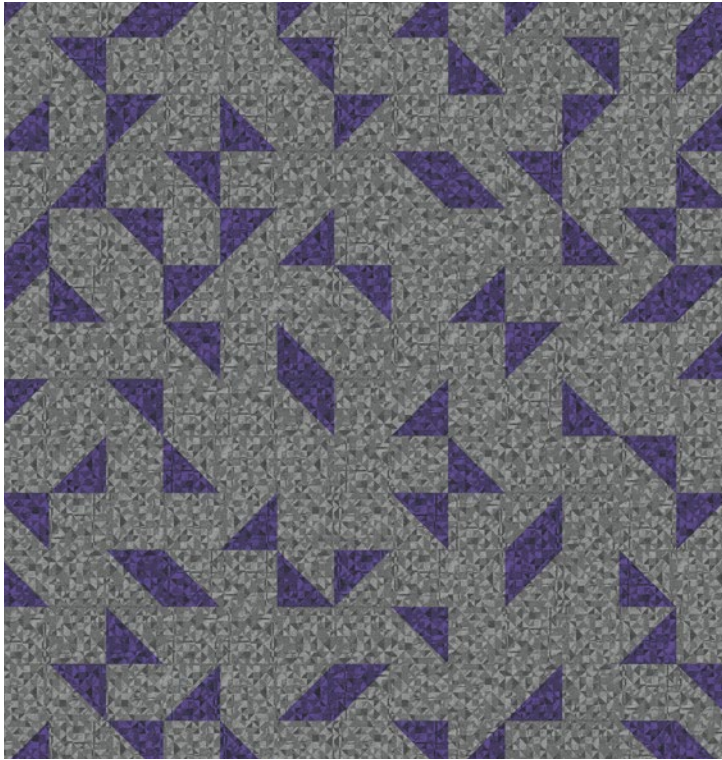


Let Origami blur the lines between art and function, offering an aesthetic that grows and evolves with the room and its inhabitants.



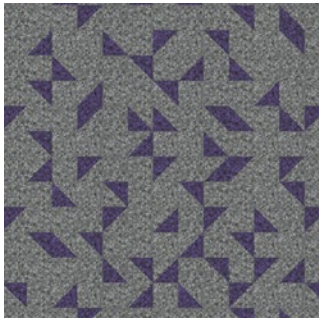
"Arita yaki" (有田焼) is a style of Japanese porcelain produced in the town of Arita, Saga Prefecture.



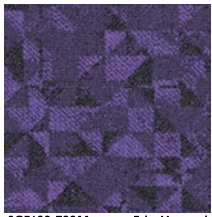


Stencil 1

6 meters



6 meters



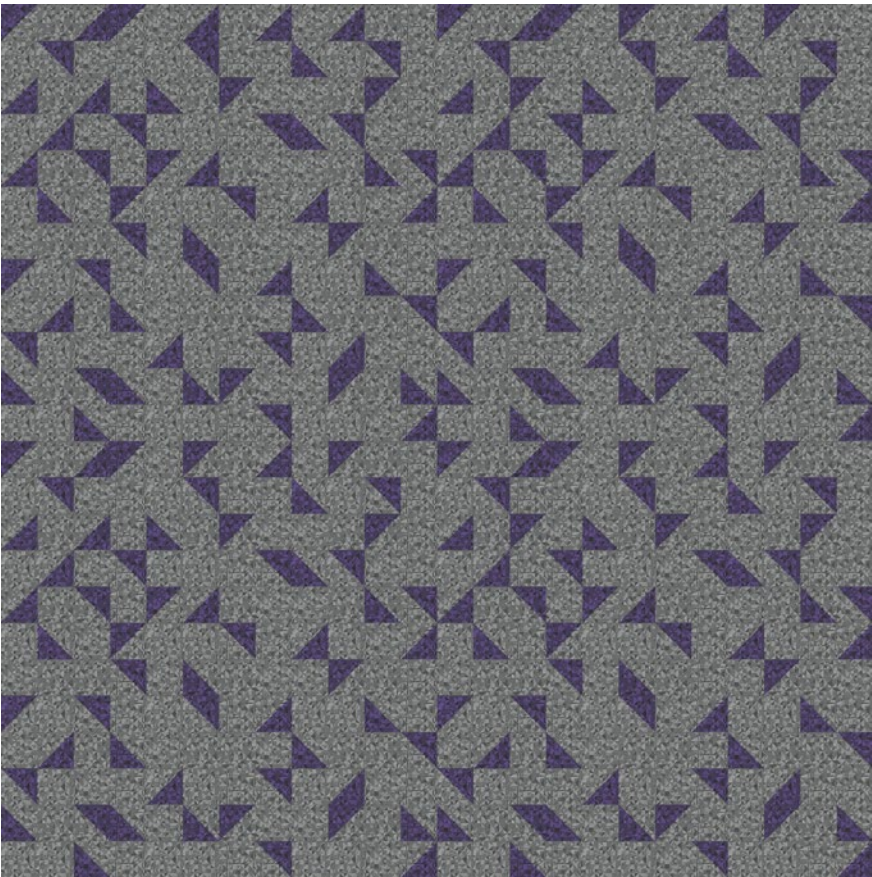
SGT630-72911 Edo Murasaki

Purple



SGT630-72501 Kabuto

Light grey

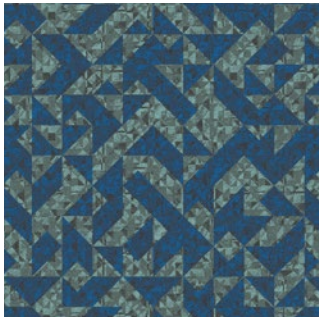


12 meters

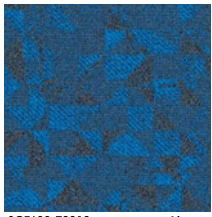
12 meters

Stencil 2

5 meters

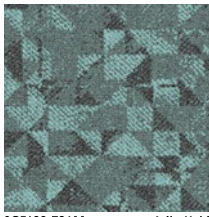


5 meters



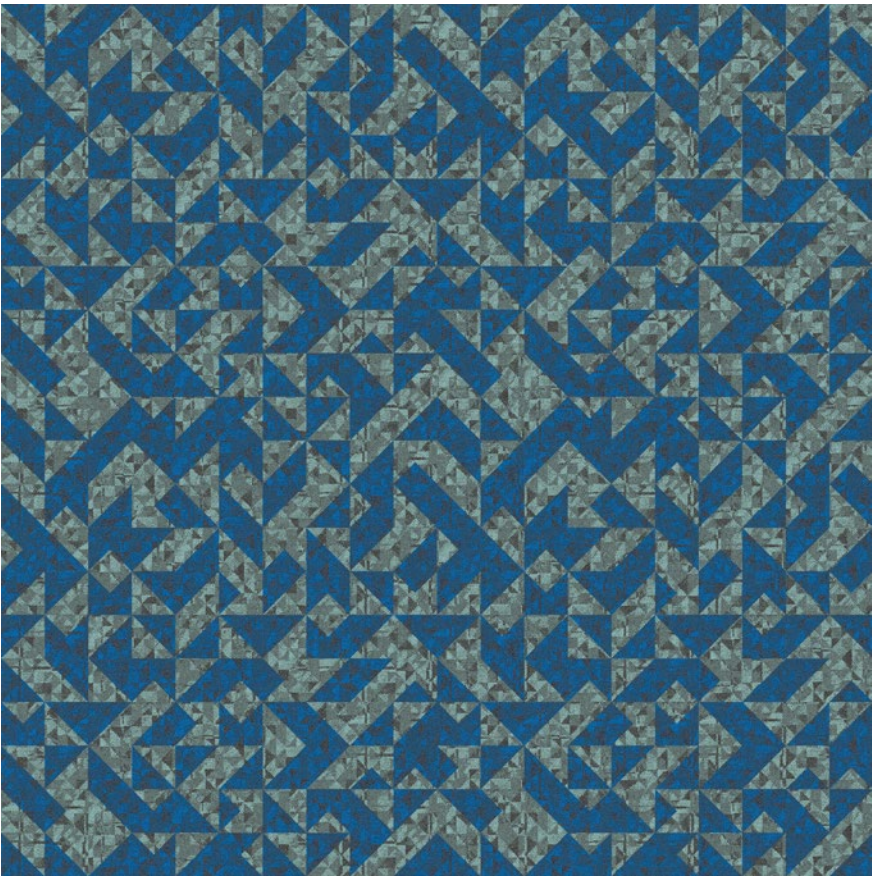
SGT630-72810 Aizome

Blue



SGT630-72611 Arita Yaki

Tiffany

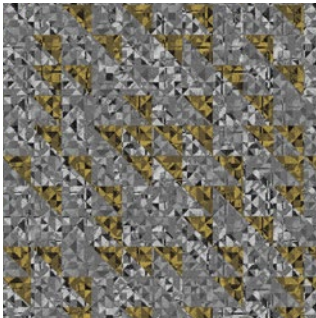


10 meters

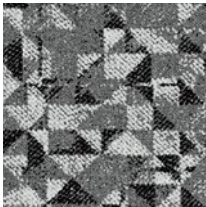
10 meters

Stencil 3

5 meters



5 meters



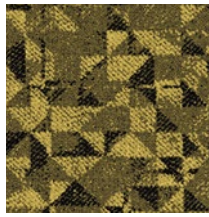
SGT630-72510 Tsuru

Off White



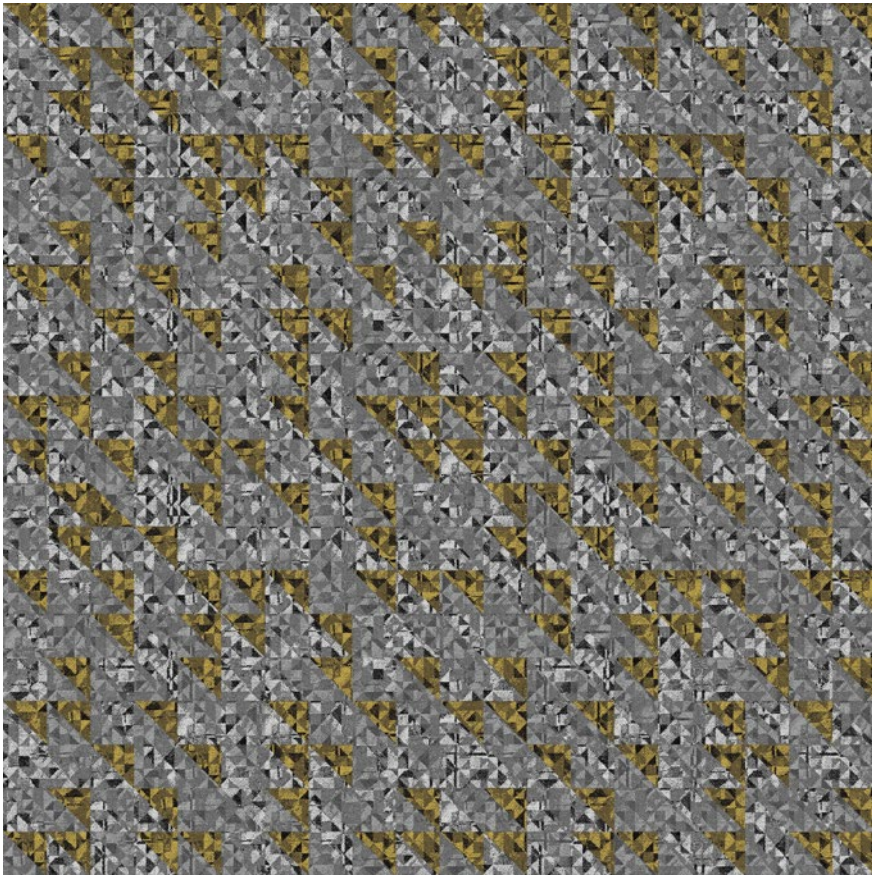
SGT630-72501 Kabuto

Light grey



SGT630-72540 Yukata

Yellow

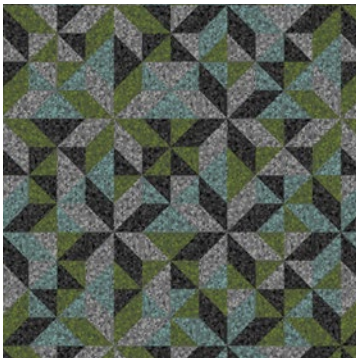


10 meters

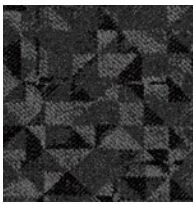
10 meters

Stencil 4

6 meters



6 meters



SGT630-72503 Ro-iro

Dark grey



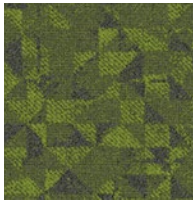
SGT630-72501 Kabuto

Light grey



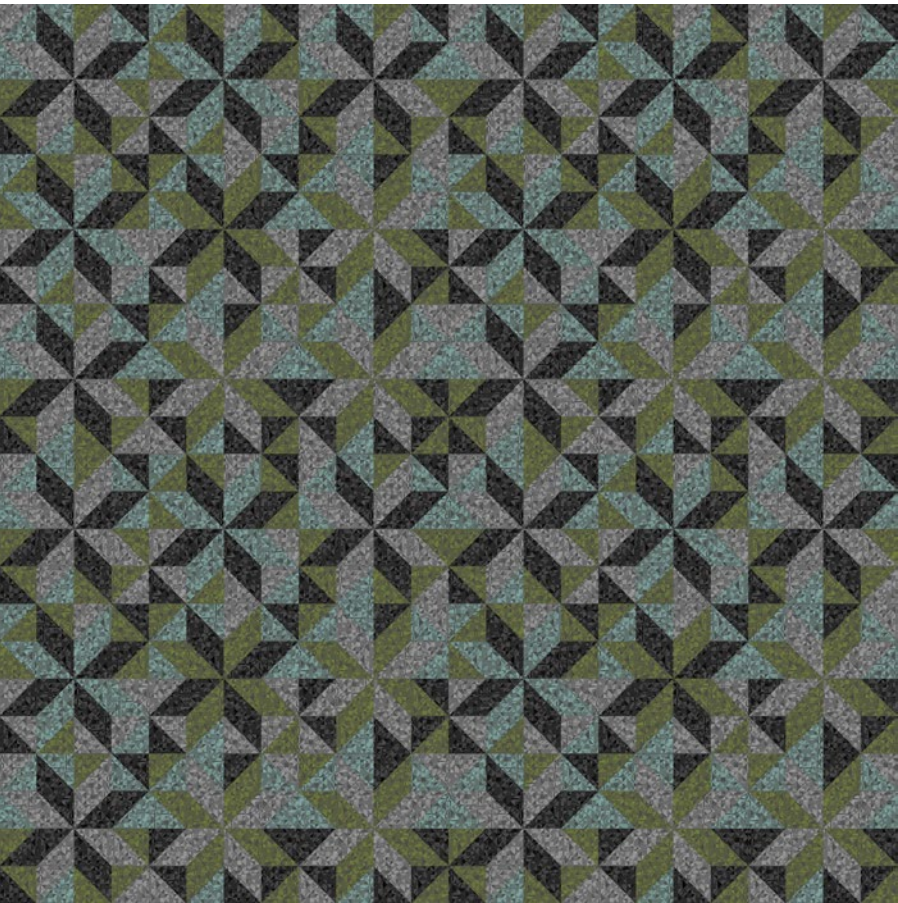
SGT630-72611 Arita Yaki

Tiffany



SGT630-72612 Matcha

Green



12 meters

12 meters