

Dry Brush SGT918

Construction	Tapestry
Tile Size	500 x 1000mm
Yarn Type	Thrive Matter®
Stain/ Soil Resistant	Resistec
Dye Method	100% Solution Dyed
Tufted Face Weight	990gm/m² (29oz/yd²) [±5%]
Gauge	1/10
Stitches per inch	11
Tufts	100
Finished Pile Height	5.15mm (0.20") [±5%]
Finished Pile Thickness	4.15mm (0.16") [±5%]
Average Density	6525oz/yd³
Secondary Backing	Sus-Pac Thermoplastic
Total Thickness	8mm (0.315") [±5%]
Total Weight	3600gm/ m² (106.16oz/yd²) [±5%]

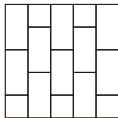
Performance Specifications

Tuft Bind	ASTM D1335 > 8lbs
Hexapod Test	ASTM D5252 > 3.0 at 12,000 cycles
Flammability (Radiant Panel Test)	ASTM E648 ≥ 0.45 (Class I)
Smoke Density	ASTM E662 ≤ 450
Soiling	ASTM D6540
Stain Resistance	AATCC 175
Dimensional Stability	ASTM D7570 < 0.2%
Methenamine Pill Test	ASTM D2859 (Self-Extinguishing)
Colorfastness to Light	(AATCC 16E) ≥ 4.0 at 80 Hours
Colorfastness to Crocking	(AATCC 165) ≥ 4.0 Wet or Dry
Electrostatic Propensity	(AATCC 134) 20% R.H., 70° F. ≤ 3.5 KV
Texture Appearance Retention Rating	(TARR) Commercial End-Use Applications
Indoor Air Quality	CRI Green Label Plus™

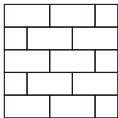
Recommended Installation Method



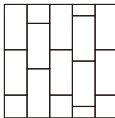
Monolithic



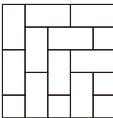
Ashlar



Brick



Stagger



Herringbone



Dry Brush





Cotton 22155



Dry brush creates a textured effect that can bring visual interest and depth to surfaces in interior spaces.

#### Dry Brush SGT918



SGT918-22155 Off White/L.Grey/M.Grey/D.Grey Cotton



SGT918-22171 Off White/L.Pink/Light grey/D.Beige Champagne



SGT918-22133 Off White/Peach/ Blue/Grey Peach

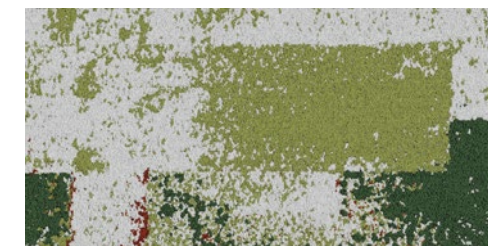
#### White base



SGT918-22198 Off White/L.Purple/D.Purple/L.Grey Orchid

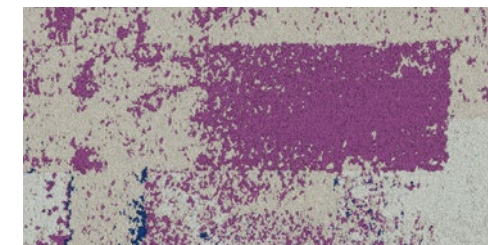


SGT918-22145 Off White/Yellow/L.Grey/D.Blue Taxi



SGT918-22164 Off White/L.Green/D.Green/Copper Moss

#### Grey base



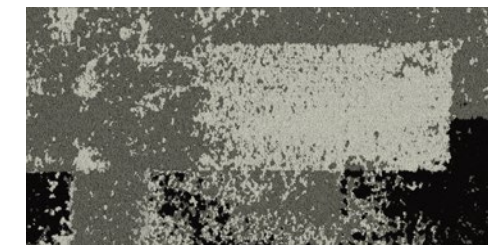
SGT918-22589 L.Grey/Blue/L.Beige/Purple Ocean



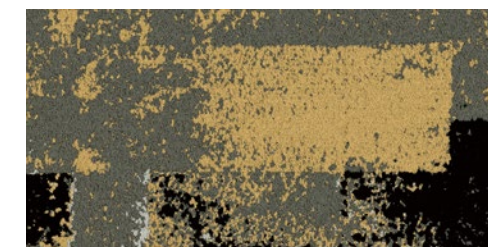
SGT918-22531 Silver/M.Grey/Black/Beige Oatmeal



SGT918-22573 L.Grey/Beige/Orange/D.Green Candy Apple



SGT918-22555 L.Grey/Silver/D.Grey/Black Gunmetal



SGT918-22545 M.Grey/Black/Gold/Silver Blond



SGT918-22503 M.Grey/D.Grey/Orange/D.Beige Fuyu



500 x 1000 mm

STITCHES  
& GAUGE









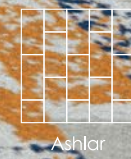
Mochi 92503 + Champagne 22171







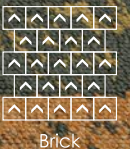
Buffalo 91602 + Taxi 22145



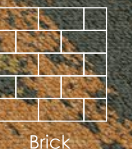




Fuyu 22503 + Outline 61504



Brick



Brick





Moss 22164



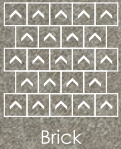




Oatmeal 22531 + Candy Apple 22573 + Rough 61201



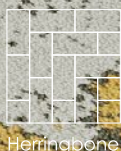








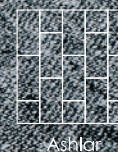
Blond 22545







Peach 22133 + Ice Black 92501



Ashlar



# Thrive matter®

As global demand in the marketplace grows for design and construction products to help support corporate commitments to environmental sustainability and eco-goals. Universal Fibers answers with Thrive matter®.

Thrive matter® stands alone as the most environmentally conscious solution-dyed, high-performance nylon 6 fiber in the World. Featuring a carbon footprint that raises the bar by creating a carbon impact that goes beyond zero, Thrive matter® is the first nylon 6 fiber to achieve carbon negative.

- Lowest CO<sub>2</sub> emission

Life Cycle Assessment (LCA)

Third-Party Certified Environmental Product Declaration

Independent GreenCircle® Certification for Recycled Content and Embodied Carbon

C2C Certified Material Health Certificates™

100% post-industrial recycled resin—for a total of 90% recycled content

100% Recyclable
- Third-party validated carbon reduction project credits

Adding value to projects in varying Green Rating Systems

Average MR < 2.0

100% solution-dyed color

High bulk, lightweight coverage

Excellent appearance retention & ease of maintenance

## Efforts that make a Climate Positive Difference

### Carbon Takeback

Universal Fibers® has partnered with accredited third parties to have all Thrive matter® products offset beyond 0.0KG CO<sub>2</sub> /Eq to create the world's first carbon negative nylon. This Carbon Takeback Program uses the life cycle assessment data (LCA) of a product (in this case,Thrive matter®) to determine the greenhouse gas (GHG) emissions of our product's entire life cycle. GHG emissions that can't be reduced or eliminated from the product lifecycle organically, are "neutralized"with third-party validated carbon offset projects.

## BY USING THRIVE MATTER®

### 89% LESS CO<sub>2</sub> OVER VIRGIN NYLON 6

How much is 89%?  
Using Thrive matter® saves more than 5 kg per square meter of carpet tile. \*\*Carpets made with Thrive matter® offset CO<sub>2</sub> emissions nearly three times more than carpets made with virgin SD nylon.

\*\*5.55 kg CO<sub>2</sub> avg. savings per sq. meter pre carbon offset

The following examples assume annual production of 100,000 sq meters (fiber weight, 600g per sq meter):



Tree Equivalent  
1 Tree: 22 kg, CO<sub>2</sub> offset  
Hyde Park: 26,000 trees (approx.)  
Thrive offset: 27,347 trees per year



Commute Equivalent  
Workday commute, Paris  
Single commuter: 800 kg per year (250 days), 752 years,  
752 commuters: 1 year

## LIFE CYCLE ASSESSMENT DATA

