

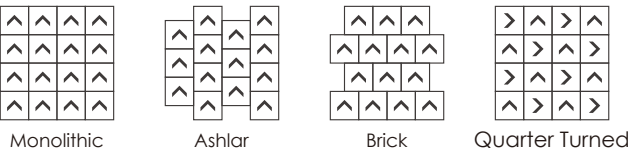
Cross Hatching SGT911

|                         |                                  |
|-------------------------|----------------------------------|
| Construction            | Tapestry                         |
| Tile Size               | 500 x 500mm                      |
| Yarn Type               | Thrive Matter®                   |
| Stain/ Soil Resistant   | Resistec                         |
| Dye Method              | 100% Solution Dyed               |
| Tufted Face Weight      | 990gm/ m² (29oz/yd²) [±5%]       |
| Gauge                   | 1/10                             |
| Stitches per inch       | 11                               |
| Tufts                   | 100                              |
| Finished Pile Height    | 5.25mm (0.21") [±5%]             |
| Finished Pile Thickness | 4.25mm (0.17") [±5%]             |
| Average Density         | 6141 oz/yd³                      |
| Secondary Backing       | Sus-Pac Thermoplastic            |
| Total Thickness         | 8mm (0.315") [±5%]               |
| Total Weight            | 3,600gm/ m² (106.16oz/yd²) [±5%] |

Performance Specifications

|                                     |  |
|-------------------------------------|--|
| Tuft Bind                           | ASTM D1335 > 8lbs                      |
| Hexapod Test                        | ASTM D5252 > 3.0 at 12,000 cycles      |
| Flammability (Radiant Panel Test)   | ASTM E648 ≥ 0.45 (Class I)             |
| Smoke Density                       | ASTM E662 ≤ 450                        |
| Soiling                             | ASTM D6540                             |
| Stain Resistance                    | AATCC 175                              |
| Dimensional Stability               | ASTM D7570 < 0.2%                      |
| Methenamine Pill Test               | ASTM D2859 (Self-Extinguishing)        |
| Colorfastness to Light              | (AATCC 16E) ≥ 4.0 at 80 Hours          |
| Colorfastness to Crocking           | (AATCC 165) ≥ 4.0 Wet or Dry           |
| Electrostatic Propensity            | (AATCC 134) 20% R.H., 70° F. ≤ 3.5 KV  |
| Texture Appearance Retention Rating | (TARR) Commercial End-Use Applications |
| Indoor Air Quality                  | CRI Green Label Plus™                  |

Recommended Installation Method



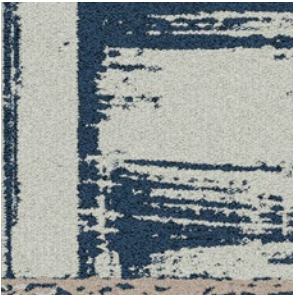
CROSS  
HATCHING





Introducing Cross Hatch, a flooring experience inspired by the timeless artistry of cross-hatching—a technique once confined to the canvas, now brought to life beneath your feet.

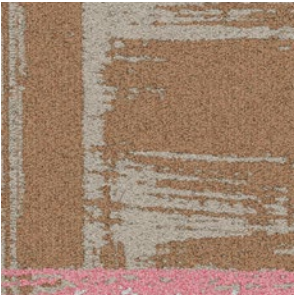
Cross Hatching SGT911



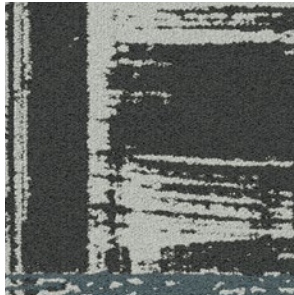
SGT911-21380 Off White  
Blue grey  
Light Beige  
Purple grey  
Glimmerhowl



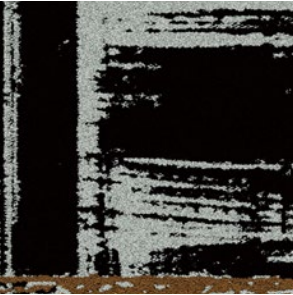
SGT911-21120 Off white  
Khaki  
Turquoise  
Brown  
Blissful Brews



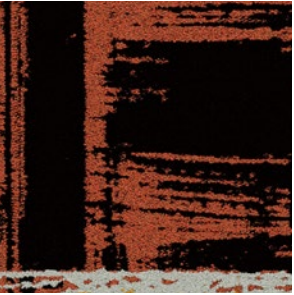
SGT911-21273 Off White  
Light Beige  
Light Brown  
Pink  
Himalayan Salt



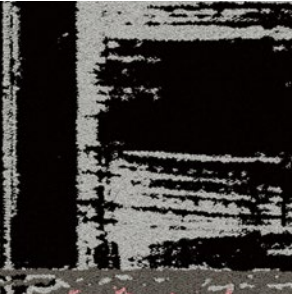
SGT911-21551 Off White  
Light Cool Grey  
Silver  
Dark Cool Grey  
Winter Hare



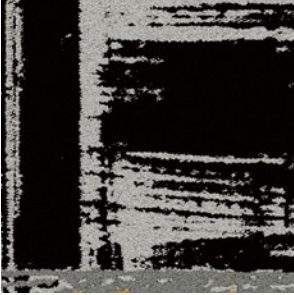
SGT911-21528 Black  
L.Grey  
Brown  
Pastel Yellow  
Caribbean Calcite



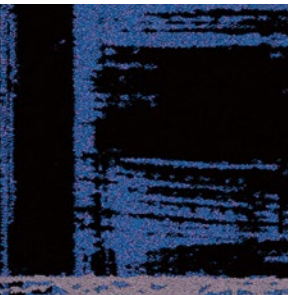
SGT911-21550 Black  
L.Grey  
Rusty Red  
Orange  
Fire Engine



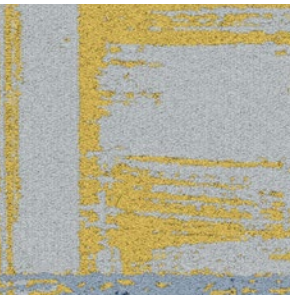
SGT911-21571 Black  
Light Cool Grey  
Dark Cool Grey  
Peach Pink  
Black Pink



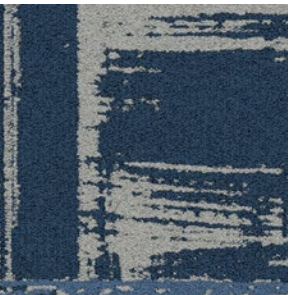
SGT911-21540 Black  
Light Cool Grey  
Mid Cool Grey  
Gold  
Gold Rush



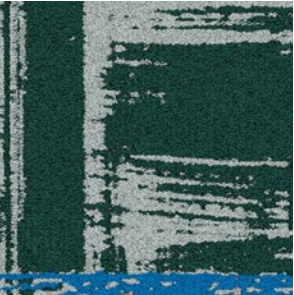
SGT911-21596 Black  
Purple Blue  
Purple  
Turquoise  
Night Pier



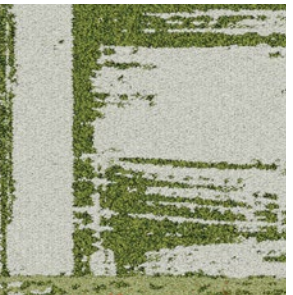
SGT911-21584 Off White  
Light Cool Grey  
Yellow  
D.Blue  
City Nightlife



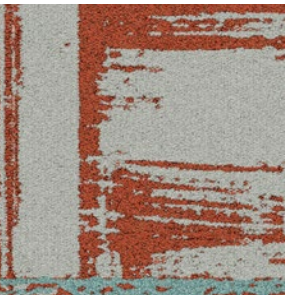
SGT911-21581 Off White  
Beige  
L.Blue  
D.Blue  
Cirrus Cloud



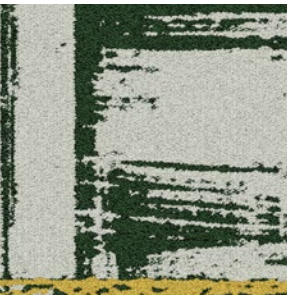
SGT911-21680 Off White  
Peach  
Blue  
D.Green  
Miami Beach



SGT911-21660 Off White  
Moss Green  
Pastel Green  
Blood Orange  
Emerald Sunrise



SGT911-21567 L.Grey  
Turquoise  
Rusty Red  
L.Brown  
Mediterranean Coral



SGT911-21455 Off White  
Dark Green  
Lemon Yellow  
Lime Green  
Tosca Pear

Square

500 x 500 mm



STITCHES  
GAUGE





“Each Cross Hatching painting tells a story of how an artist uses strokes to bring depth, dimension, and emotion to a sketch. This painting weaves light and shadow, texture and color, to transform your space into a masterpiece.” - T.Soo





“This is a canvas of intersecting lines, precision patterns, and purposeful imperfections that mimic a biophilic environment. It promotes well-being and integrating natural elements into our living spaces to improve our mental health.” - R.L.



Emerald Sunrise 21660







“Much like the deliberate lines of a designer’s sketch, this Cross Hatch creates a subtle rhythm and texture, capturing movement, guiding flow, and adding visual intrigue without overwhelming.”

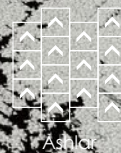
- Ed.G



**GOLD**  
*Rush*



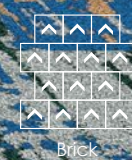
Black Pink 21571 + Gold Rush 21540







Miami Beach 21680



**Miami  
Beach**

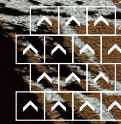




CARIBBEAN BEACH  
*Resort*



Tosca Pear 21455 + Caribbean Calcite 21528



Brick



*Winter*  
**HARE**



Winter Hare 21551

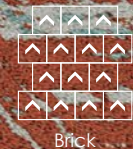




# M CLUB



Fire Engine 21550 + Mediterranean Cora 21567









# Thrive matter®

As global demand in the marketplace grows for design and construction products to help support corporate commitments to environmental sustainability and eco-goals. Universal Fibers answers with Thrive matter®.

Thrive matter® stands alone as the most environmentally conscious solution-dyed, high-performance nylon 6 fiber in the World. Featuring a carbon footprint that raises the bar by creating a carbon impact that goes beyond zero, Thrive matter® is the first nylon 6 fiber to achieve carbon negative.

- Lowest CO<sub>2</sub> emission

Life Cycle Assessment (LCA)

Third-Party Certified Environmental Product Declaration

Independent GreenCircle® Certification for Recycled Content and Embodied Carbon

C2C Certified Material Health Certificates™

100% post-industrial recycled resin—for a total of 90% recycled content

100% Recyclable
- Third-party validated carbon reduction project credits

Adding value to projects in varying Green Rating Systems

Average MR < 2.0

100% solution-dyed color

High bulk, lightweight coverage

Excellent appearance retention & ease of maintenance

## Efforts that make a Climate Positive Difference

### Carbon Takeback


Universal Fibers® has partnered with accredited third parties to have all Thrive matter® products offset beyond 0.0KG CO<sub>2</sub> /Eq to create the world's first carbon negative nylon. This Carbon Takeback Program uses the life cycle assessment data (LCA) of a product (in this case,Thrive matter®) to determine the greenhouse gas (GHG) emissions of our product's entire life cycle. GHG emissions that can't be reduced or eliminated from the product lifecycle organically, are "neutralized"with third-party validated carbon offset projects.

## BY USING THRIVE MATTER®


### 89% LESS CO<sub>2</sub> OVER VIRGIN NYLON 6

How much is 89%?  
Using Thrive matter® saves more than 5 kg per square meter of carpet tile. \*\*Carpets made with Thrive matter® offset CO<sub>2</sub> emissions nearly three times more than carpets made with virgin SD nylon.  
  
\*\*5.55 kg CO<sub>2</sub> avg. savings per sq. meter pre carbon offset

The following examples assume annual production of 100,000 sq meters (fiber weight, 600g per sq meter):



Tree Equivalent  
1 Tree: 22 kg, CO<sub>2</sub> offset  
Hyde Park: 26,000 trees (approx.)  
Thrive offset: 27,347 trees per year



Commute Equivalent  
Workday commute, Paris  
Single commuter: 800 kg per year (250 days), 752 years,  
752 commuters: 1 year

## LIFE CYCLE ASSESSMENT DATA

