

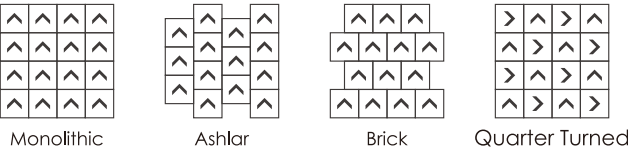
Sketches SGT611

Construction	Tufted Textured Loop
Tile Size	500 x 500mm
Yarn Type	FITTON Premium Nylon
Stain/ Soil Resistant	Resistec
Dye Method	100% Solution Dyed
Tufted Face Weight	580gm/m² (17oz/yd²) [±5%]
Gauge	1/12
Stitches per inch	10
Tufts	120
Finished Pile Height	4.57mm (0.18") [±5%]
Finished Pile Thickness	3.05mm (0.12") [±5%]
Average Density	5100oz/yd³
Secondary Backing	Sus-Pac Thermoplastic
Total Thickness	7mm (0.276") [±5%]
Total Weight	2,980gm/m² (87.64oz/yd²) [±5%]

Performance Specifications

Tuft Bind	ASTM D1335 > 8lbs
Hexapod Test	ASTM D5252 > 3.0 at 12,000 cycles
Flammability (Radiant Panel Test)	ASTM E648 ≥ 0.45 (Class I)
Smoke Density	ASTM E662 ≤ 450
Soiling	ASTM D6540
Stain Resistance	AATCC 175
Dimensional Stability	ASTM D7570 < 0.2%
Methenamine Pill Test	ASTM D2859 (Self-Extinguishing)
Colorfastness to Light	(AATCC 16E) ≥ 4.0 at 80 Hours
Colorfastness to Crocking	(AATCC 165) ≥ 4.0 Wet or Dry
Electrostatic Propensity	(AATCC 134) 20% R.H., 70° F. ≤ 3.5 KV
Texture Appearance Retention Rating	(TARR) Commercial End-Use Applications
Indoor Air Quality	CRI Green Label Plus™

Recommended Installation Method



SKETCHES

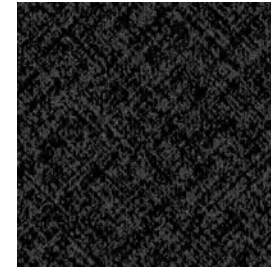


SKETCHES

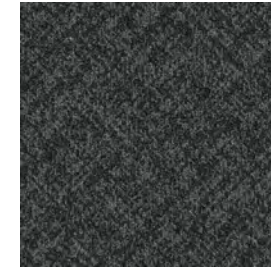
STITCHES
& GAUGE

Step into a world where artistic expression meets functional design with our latest style SKETCHES. Inspired by the timeless technique of cross-hatching in drawing and shading, this collection transcends traditional boundaries to bring a touch of artistic flair to your floors.

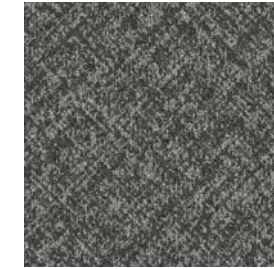
Sketches SGT611



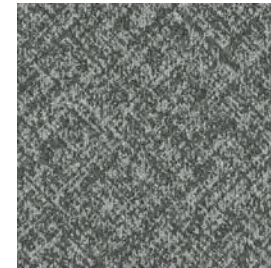
SGT611-61501 Sketch



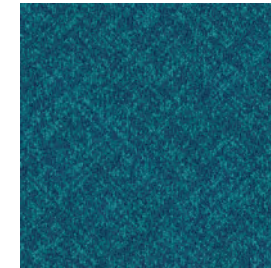
SGT611-61502 Prototype



SGT611-61503 Expression



SGT611-61504 Outline



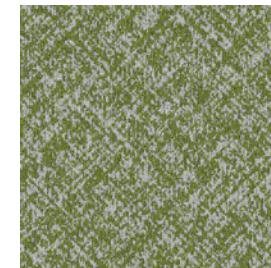
SGT611-61801 Loose



SGT611-61802 Diagram



SGT611-61601 Free hand



SGT611-61602 Tracing



SGT611-61603 Crime scene



SGT611-61201 Rough



SGT611-61202 Caricature



SGT611-61301 Plan



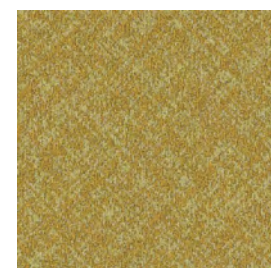
SGT611-61302 Urban



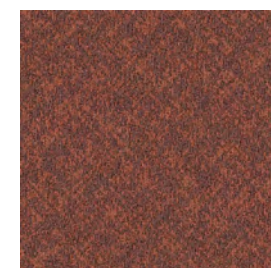
SGT611-61901 Representation



SGT611-61902 Bohemian



SGT611-61401 Preliminary



SGT611-61701 Modello



SGT611-61702 Layout

STITCHES
& GAUGE



By layering sets of parallel lines at different angles, the density and spacing of these lines determine the tonal values and textures within the carpet tile.



STITCHES
& GAUGE



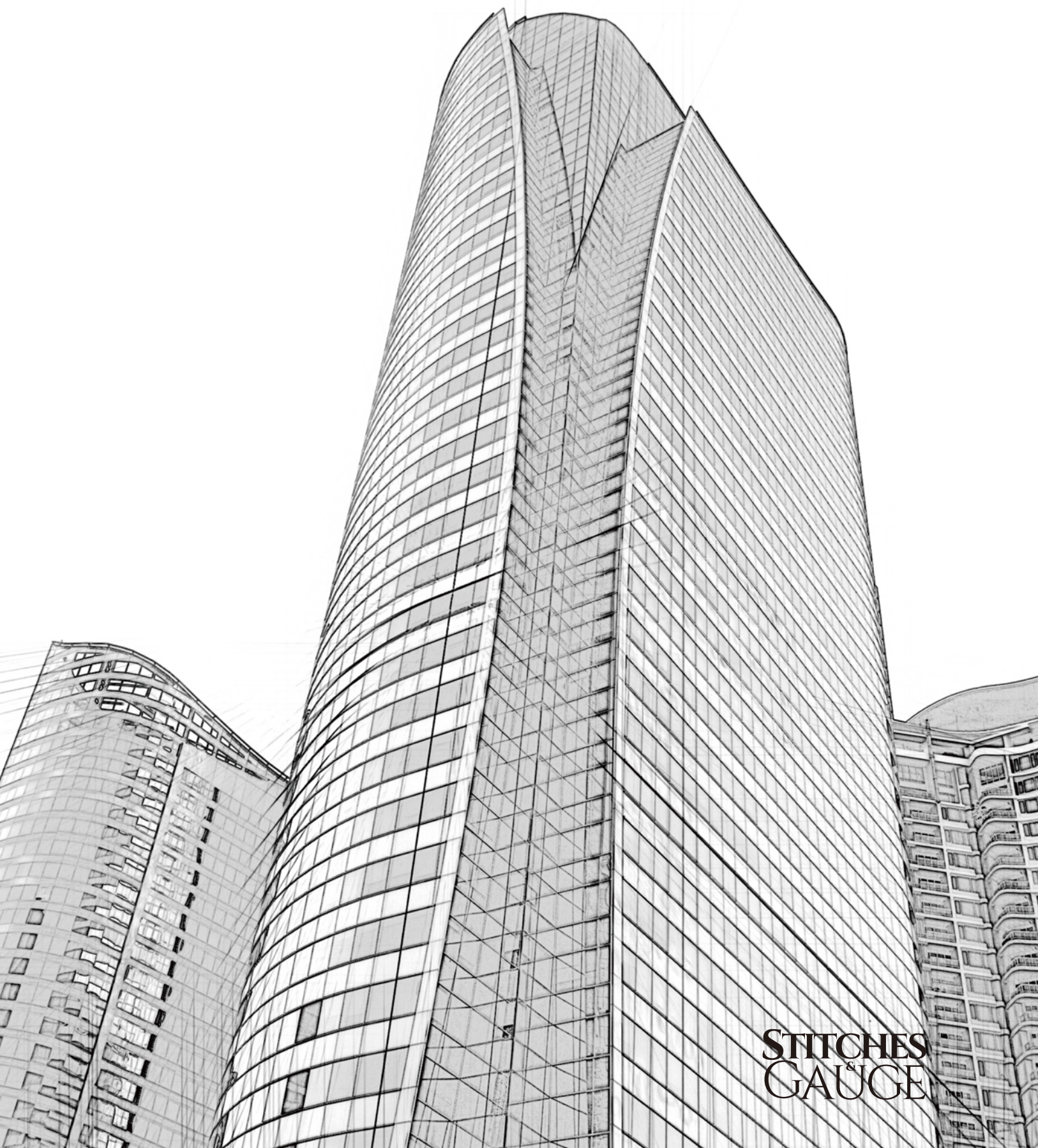
Free hand 61601 + Prototype 61502







The direction of the lines can influence the perception of form and texture. Our designers have strategically varied the angles and directions of crosshatching to contour surfaces and enhance the three-dimensional quality in the tile, that redefine the concept of carpeting.



STITCHES
GAUGE



Outline 61504 + Expression 61503 + Prototype 61502
+ Diagram 61802 + Loose 61801 + Representation 61901



Monolithic





