



LOW EMBODIED CARBON | CARBON NEUTRAL



# Teamwork

ShawContract®





# Moving Together

What makes teams work? When each person brings their unique talents, ideas and strengths to the team, that’s when the real magic happens. With clarity and understanding, a team can move quickly with a united sense of purpose.

The same can be said for the ***Teamwork*** collection. When the individual styles come together, the collective impact deeply resonates to connect, energize, and create a sense of movement and direction.

COVER: **COLLABORATION (CARPET TILE 5T497)** IN PROGRESS (97515) + TRUE PROGRESS (97496) + MEANINGFUL PROGRESS (97865) + EFFICIENT PROGRESS (97375) + RAPID PROGRESS (97405) AND **HUDDLE (CARPET TILE 5T498)** IN PROGRESS (97515) AND **KICKOFF (CARPET TILE 5T499)** IN PROGRESS (97515) + STEADY PROGRESS (97518) AND **FOLLOW UP (CARPET TILE 5T500)** IN PROGRESS (97515) + STEADY PROGRESS (97518)

ABOVE: **FOLLOW UP (CARPET TILE 5T500)** IN STEADY PROGRESS (97518) | INSTALLED ASHLAR



**FOLLOW UP**  
A subtle textured pattern that’s ideal on its own in quiet spaces or as a foundation to build a bolder installation.

**FOLLOW UP (CARPET TILE 5T500)** IN STEADY PROGRESS (97518) + **COLLABORATION (CARPET TILE 5T497)** IN TRUE PROGRESS (97496) | INSTALLED STAGGER





#### COLLABORATION

This medium-scale, multi-directional pattern adds energy and personality through graphic grid work and a unique range of color options.



COLLABORATION (CARPET TILE 5T497) IN STEADY PROGRESS (97518) + MEANINGFUL PROGRESS (97865) | INSTALLED BRICK





LOW EMBODIED CARBON | CARBON NEUTRAL

This collection is composed of several styles that work together like a well-connected team and independently contribute to a space as valuable team members.

**Teamwork** is a 9 x 36 carpet tile collection manufactured with **EcoSolution Q100™**, a high performance 100% recycled content nylon fiber, allocated from pre-consumer sources. Products with EcoSolution Q100™ are optimized for low embodied carbon and are carbon neutral.

For more than 20 years, we have invested in material health with our **EcoWorx®** PVC-free carpet tile backing, the first flooring product to be Cradle to Cradle Certified® Silver.

Truly people together, planet forever.



#### KICKOFF

Intersecting linework offers bursts of energy and a sense of play to build momentum in your space and spark bright ideas.

KICKOFF (CARPET TILE 5T499) IN STEADY PROGRESS 97518 AND COLLABORATION (CARPET TILE 5T497) IN RAPID PROGRESS (97405) | INSTALLED STAGGER





HUDDLE (CARPET TILE 5T498) IN PROGRESS (97515) | INSTALLED STAGGER



**HUDDLE**  
A subdued, textural foundation works well with all the team members while providing a powerful pause.

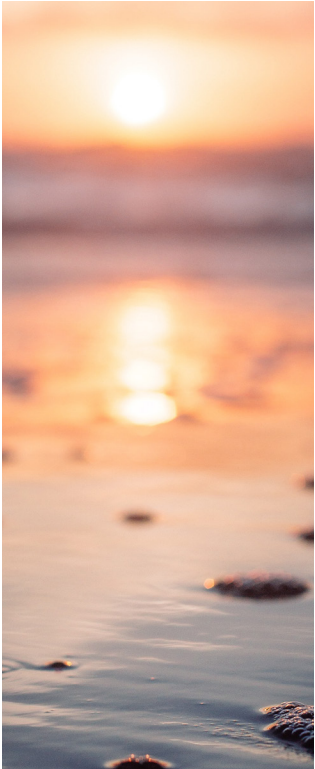


Every team is made up of eclectic personalities and strengths.



The Visionary

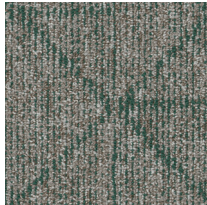
This dreamer sees things not as they are, but as what they can become. Charismatic and inspiring, visionaries bring imagination and wisdom to every project. Pastels and warm neutrals inform their creative sensibility.



Impact  
97100



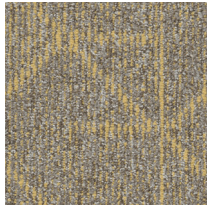
High Impact  
97111



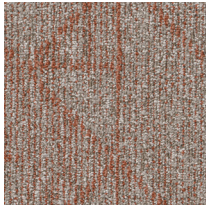
Strategic Impact  
97396



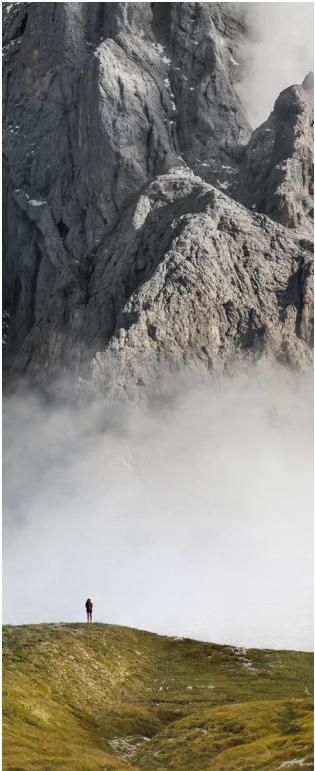
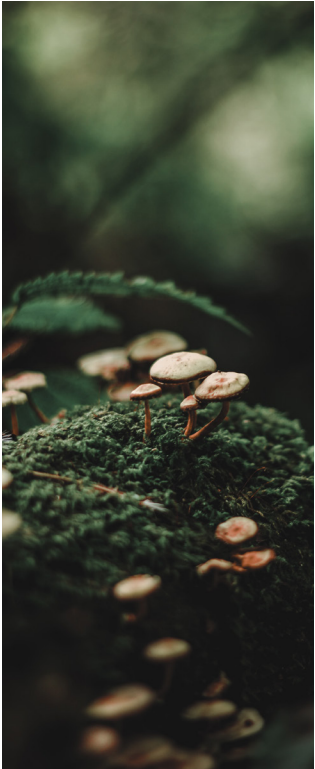
Clear Impact  
97485



Purposeful Impact  
97211



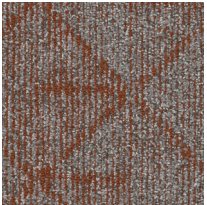
Positive Impact  
97676



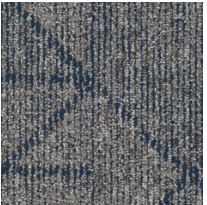
Progress  
97515



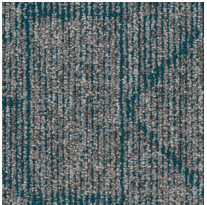
Steady Progress  
97518



Meaningful Progress  
97865



True Progress  
97496



Rapid Progress  
97405



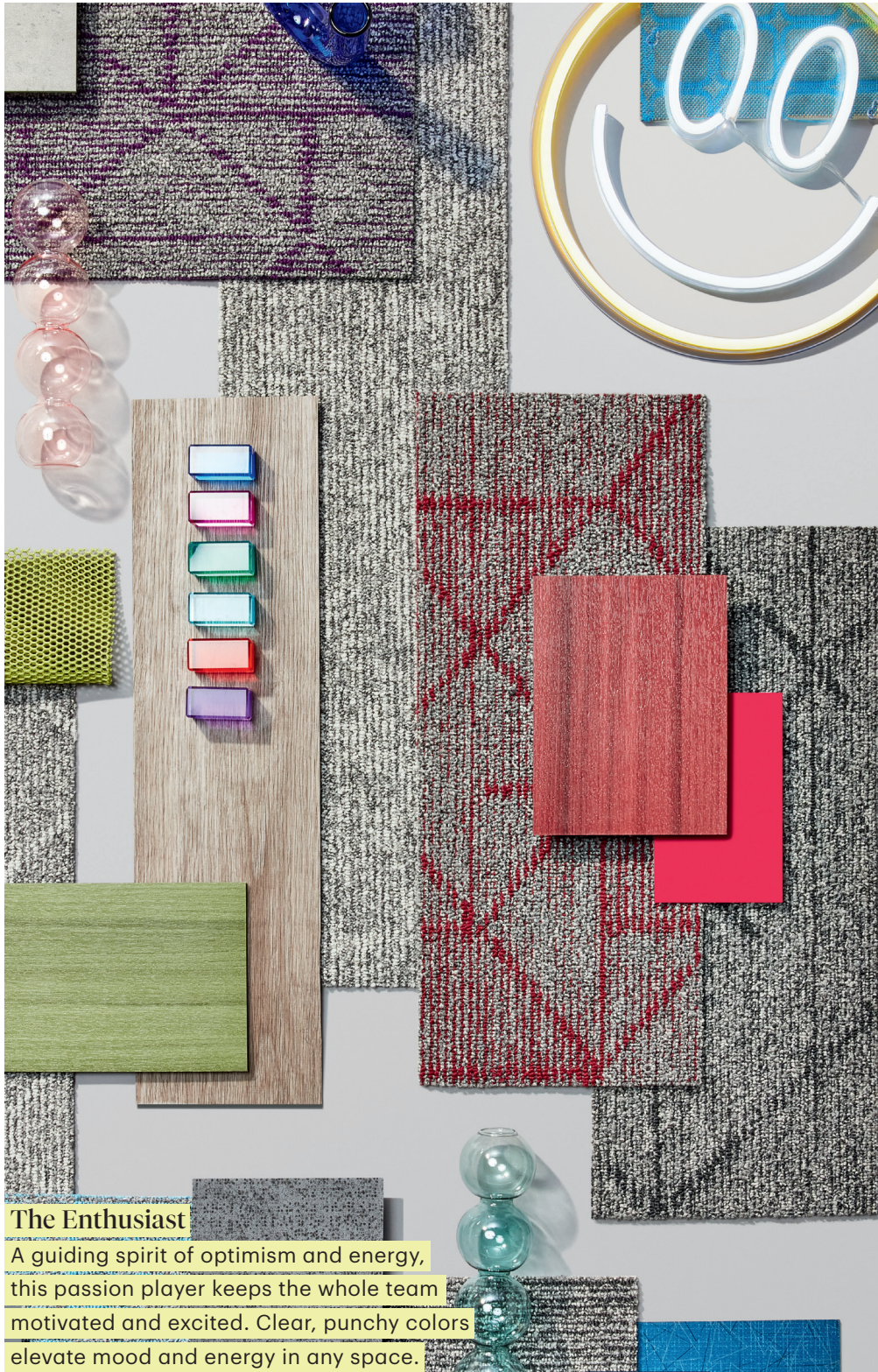
Efficient Progress  
97375



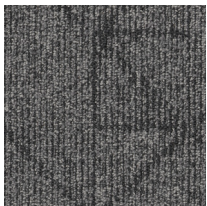
The Grounded One

The leader builds the foundation while establishing order and purpose. Earthy, pragmatic hues bring stability to the palette and the spaces where they reside.

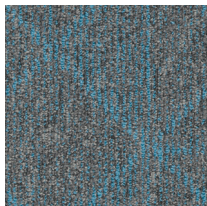




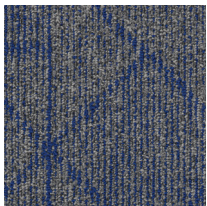
Influence  
97535



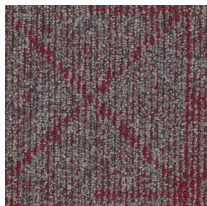
Influence Others  
97555



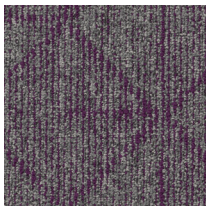
Influence Outcomes  
97411



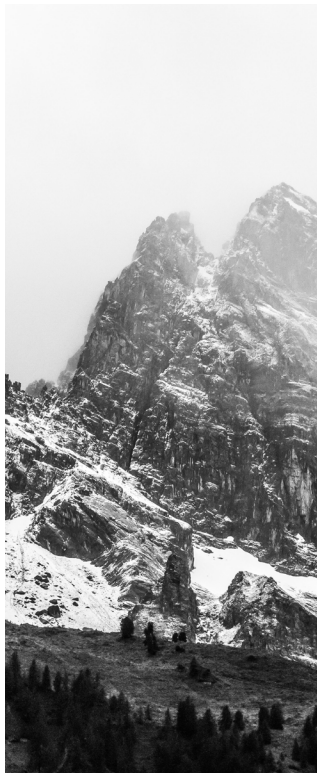
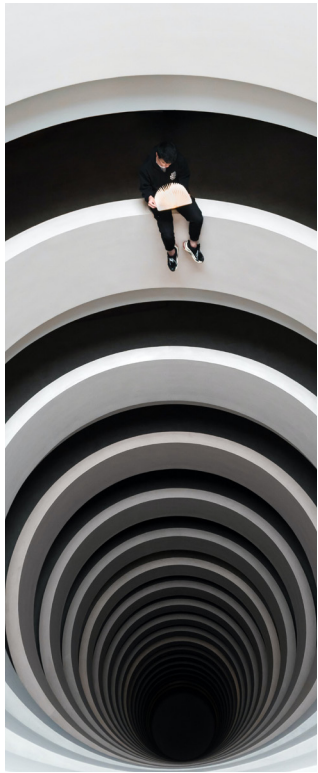
Influence Results  
97429



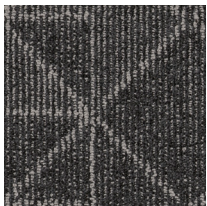
Influence Process  
97855



Influence Change  
97979



Contribute  
97500



Innovate  
97505





Even the yarn itself represents a sense of teamwork. An airy texture comes together with a heathered visual to serve as the foundation for each style in the collection.



At the heart of Shaw Contract we create products and solutions that positively impact people and the planet. **We are Design Optimists.**

Sustainability is what unites us. It is our foundation and our purpose: our equal rights, our shared experience, our hopeful future. It is the air we breathe and the earth we stand upon.

For more information about these attributes, contact your local Shaw Contract account manager, visit us at [shawcontract.com](http://shawcontract.com) or call 1.800.257.7429.

### Material Health

We design and manufacture products to optimize human environments.



#### Cradle to Cradle Certified® Silver

Teamwork styles are third-party verified as being safe, circular, and responsibly made.



#### Indoor Air Quality

People spend 90% of their time indoors, making these environments critical to our wellbeing. These products are Green Label Plus (GLP) Certified, meeting the California Department of Public Health (CDPH) indoor air quality standards for low-emitting products.



#### Product Transparency

Teamwork styles have an HPD, which is a transparent disclosure of product content and associated health information.



#### LBC Red List Approved

Teamwork styles are LBC Red List Approved. Proprietary ingredients are not disclosed on the Declare label, but all raw materials have been third-party confirmed as being complaint with the RED LIST of the Living Building Challenge.

### Carbon Impact

We are a positive force in the global effort to collectively fight climate change.



#### 50% Reduced Carbon Footprint

As a result of Shaw’s investments to help reduce our energy and greenhouse gas impact, we have cut our Scope 1 & 2 emissions by more than half since our 2010 baseline.



#### Carbon Neutral

This collection of carpet tile is carbon neutral and is manufactured in a carbon neutral manufacturing location.



#### Low Embodied Carbon

Teamwork styles have a third-party verified EPD.



#### EcoSolution Q100™ Reduces Carbon

EcoSolution Q100™ is a high-performance nylon fiber with 100% recycled content, optimized for low embodied carbon. Every square yard reduces the carbon impact by 42%, versus traditional carpet tile.

### Circular Economy

We practice a regenerative, closed-loop approach to sustainability.



#### We Want it Back

At the end of its useful life, we’ll reclaim and recycle carpet to make more carpet products. Since 2006, Shaw has reclaimed and recycled nearly 1 billion pounds of post consumer carpet reducing landfill waste.

### Diversity, Equity & Inclusion

We nurture an environment where every voice and perspective can be heard, with equal value placed on seen and unseen experiences.



#### Supplier Diversity Program

We promote supplier participation that is reflective of Shaw Industries’ diverse customer base and local community. More than 42% of our spend\* is with small and diverse businesses. We believe having a strong Supplier Diversity Program is strategic for bringing more innovation to our businesses and opening new markets for growth.

\*Allowable spend is domestic (US) spend in categories in which we have diverse suppliers from which to choose.



