

AVA[®]LAGM

Global Offices

Asia

Hong Kong, China
Global Headquarters

Shanghai, China
Sales Office

Europe

Cologne, Germany
Sales Office

North America

Dalton, USA
North American Headquarters

Mooresville, USA
Sales Office

Richmond Hill, Canada
Support Office

Global R&D and Manufacturing Hubs

Zhenjiang, China
China R&D and Manufacturing Center

Dalton, USA
US R&D and Manufacturing Center





COLOUR LAG005 INSTALLED RANDOM

LAG002

LAG006

LAG005

LAG008



COLOUR LAG004 INSTALLED RANDOM

LAGM

GD: 241mmx1517mm | LLT: 241mmx1517mm | HDC: 197mmx1518mm



GD: LAG001 | LLT: LAG001L | HDC: LAG001-605DL



GD: LAG002 | LLT: LAG002L | HDC: LAG002-605DL



GD: LAG003 | LLT: LAG003L | HDC: LAG003-605DL



GD: LAG004 | LLT: LAG004L | HDC: LAG004-605DL



GD: LAG005 | LLT: LAG005L | HDC: LAG005-605DL



GD: LAG006 | LLT: LAG006L | HDC: LAG006-605DL



GD: LAG007 | LLT: LAG007L | HDC: LAG007-605DL



GD: LAG008 | LLT: LAG008L | HDC: LAG008-605DL



COLOUR LAG001 INSTALLED RANDOM



COLOUR LAG002 INSTALLED RANDOM



COLOUR LAG003 INSTALLED HERRINGBONE







COLOUR LAG007 INSTALLED HERRINGBONE
SPECIAL SIZE GD:150mm×749mm | HDC:145mm×743mm
MOQ 300m²

LAGM

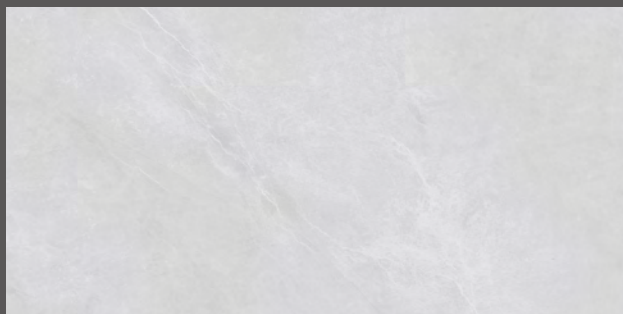
GD: 457mmx914mm | LLT: 457mmx914mm | HDC: 467mmx908mm



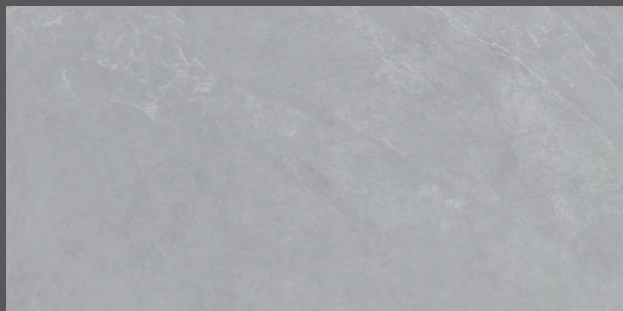
GD: LAG009 | LLT: LAG009L | HDC: LAG009-605DL



GD: LAG010 | LLT: LAG010L | HDC: LAG010-605DL



GD: LAG011 | LLT: LAG011L | HDC: LAG011-605DL



GD: LAG012 | LLT: LAG012L | HDC: LAG012-605DL



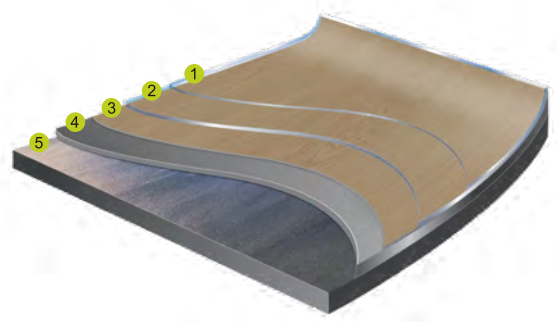
COLOUR LAG009/LAG010 INSTALLED ASHLAR





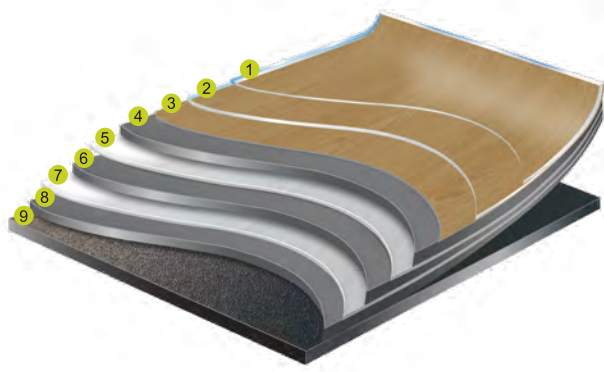
PRODUCT STRUCTURE

GlueDown



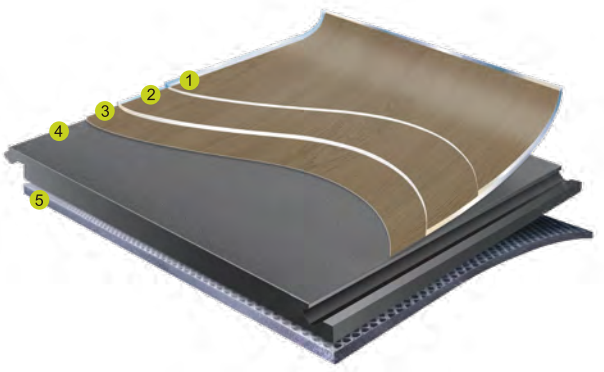
- ① AMP PU coating for added scratch, stain, scuff, abrasion and fade resistance
- ② Transparent vinyl wear layer that's extremely durable
- ③ Printed layer to recreate the look and texture of natural materials
- ④ Middle vinyl layer for extra stability and support
- ⑤ Vinyl backing layer with high resistance to pressure

LLT (Loose Lay Tile)



- ① AMP PU coating for enhanced scratch, stain, scuff, abrasion and fade resistance
- ② Transparent vinyl wear layer that's extremely durable
- ③ Printed layer to recreate the look and texture of natural materials
- ④ Vinyl base layer for stability and support
- ⑤ Fiberglass layer to minimize expansion and contraction
- ⑥ Vinyl base layer for stability and support
- ⑦ Fiberglass layer to minimize expansion and contraction
- ⑧ Vinyl base layer for stability and support
- ⑨ Vinyl blacking layer with high resistance to pressure

HDC (High Density Core)



- ① AMP PU coating for added scratch, stain, scuff, abrasion and fade resistance
- ② Transparent vinyl wear layer that's extremely durable
- ③ Printed layer directly laminated to the HDC
- ④ Rigid waterproof HDC resists dents and hides most subfloor imperfections
- ⑤ Foam underlayment for sound barrier and comfort

CERTIFICATIONS

Low VOC Certifications



ISO Certifications



Transparency



Other Safety Standards

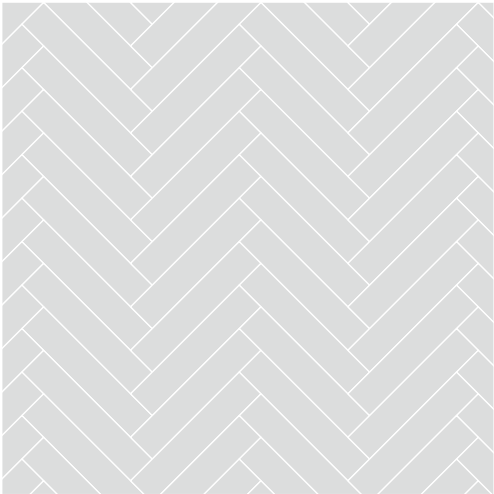


Due to printing reasons, there may be slight color differences between the actual product and the images. Please refer to the physical product for the most accurate color representation.

HERRINGBONE



LAG004
GD: 150mm × 749mm
HDC: 145mm × 743mm

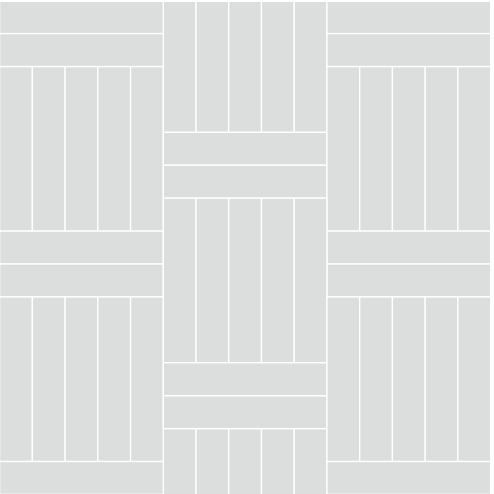


MOQ: 300m²

HERRINGBONE



LAG004
GD: 150mm × 749mm

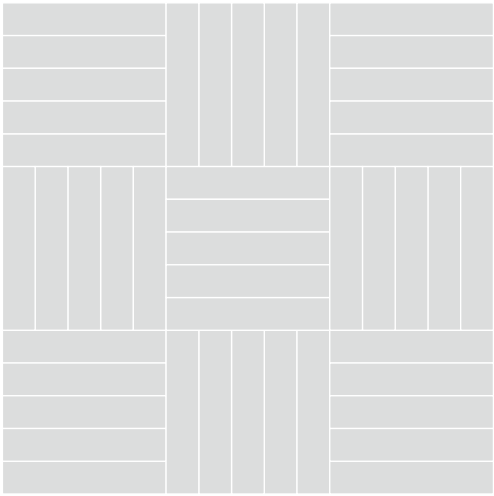


MOQ: 300m²

HERRINGBONE



LAG004
GD: 150mm × 749mm

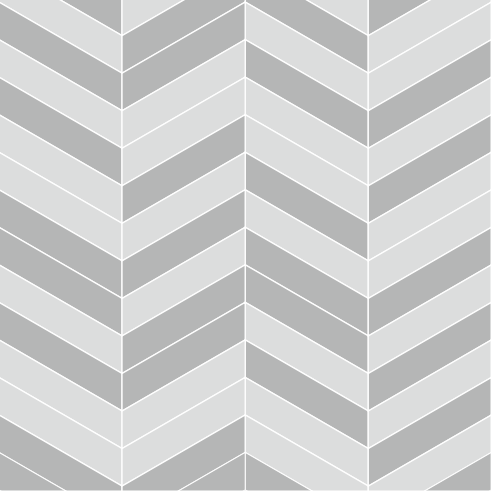


MOQ: 300m²

CHEVRON



LAG006 | LAG007
GD: 152mm × 665mm



MOQ: 300m²