



KINDRED

shaw contract®

The Collection

24 x 24 in | 61 x 61 cm

Bringing warmth, comfort and emotion into unique spaces

A spiritual or emotional connection to the people and places in our lives creates impactful moments. We long for a sense of belonging. We dream of ideas and things bigger than ourselves. And we create memories to look back and remind us what is important.

—

belong 5T261 in hearten 48515 + serene 48486 | installed monolithic

cover: **belong** 5T261 in golden 48211 + greenery 48370 + serene 48486 + hearten 48515 | installed monolithic



The Story

Kindred expresses the spirit or emotional connection to the people and places that impact us. We **Belong** to the culture or identity of a company, school, global organization. Once we are connected within a group or organization, we **Dream** of new ideas together. The journey of collaboration across multiple channels culminates in a beautiful expanse that allows us to create **Memorable** experiences where people work, learn, heal and play.



The Emotional Connection

Create an emotional connection to a built environment through impactful moments and transitions with the Kindred tile collection. Designed to evoke feeling and personal connection, Kindred demonstrates growth within a space equivalent to that experienced by those functioning within it. It is a representation of the existence, growth and complexity that link us back to the people and places that initially brought those feelings to the surface.

—

memory 5T263 in hearten 48515 | installed monolithic

Kindred combines colour and pattern to allow for dynamic spaces in unique applications. This collection offers varying scales of design intended for pattern interplay. As the collection progresses, pattern complexity increases to allow for either simplistic or intricate installations.

—

Danielle Dean, Designer | Global Studio

Colour

The colours for this collection were strategically selected to bring the comforts of home to built environments, anywhere in the world. The diverse colour palette provides dimensionality to the collection, allowing for functional use in workplace, education and healthcare applications.

dream 5T265 in golden 48211 + hearten 48515 + serene 48486 | installed monolithic with quarter turn accents + **cove** 0927V in caster 27518 | installed stagger



Colour Palette



greige

48516



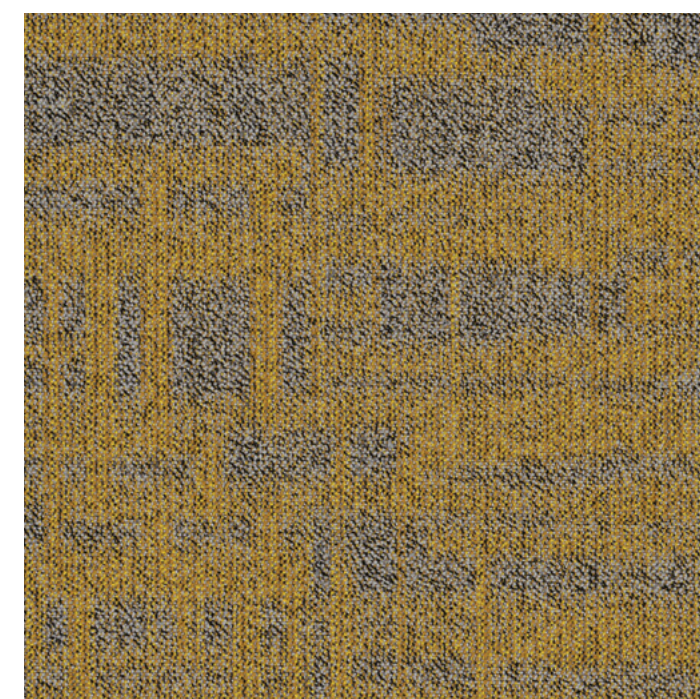
ponder

48530



warmth

48111



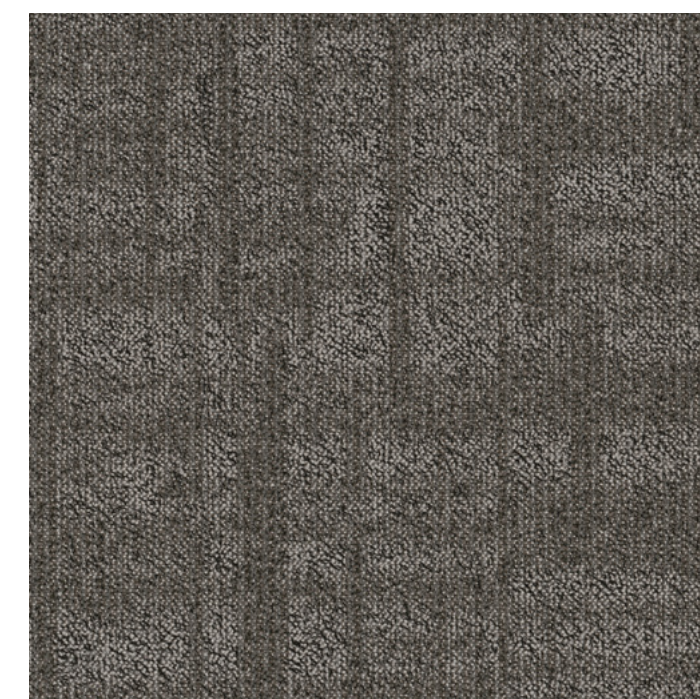
golden

48211



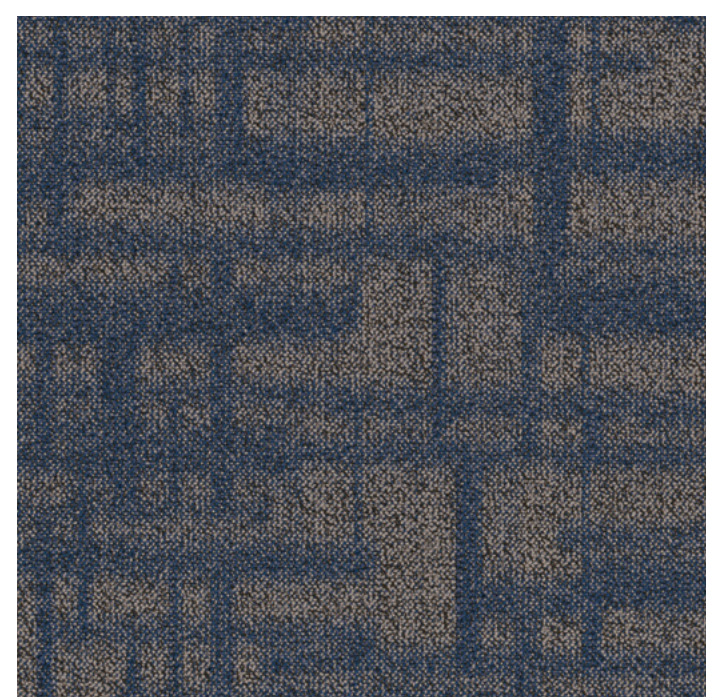
rainstorm

48536



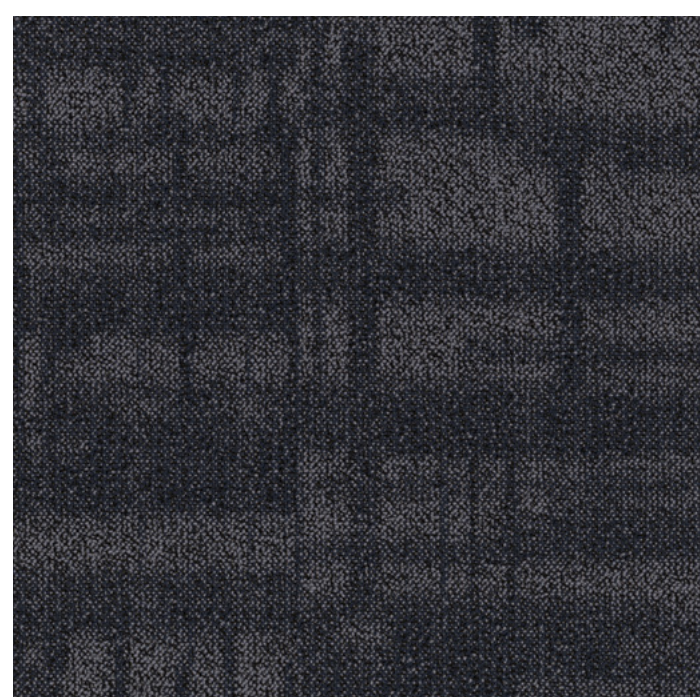
hearten

48515



serene

48486



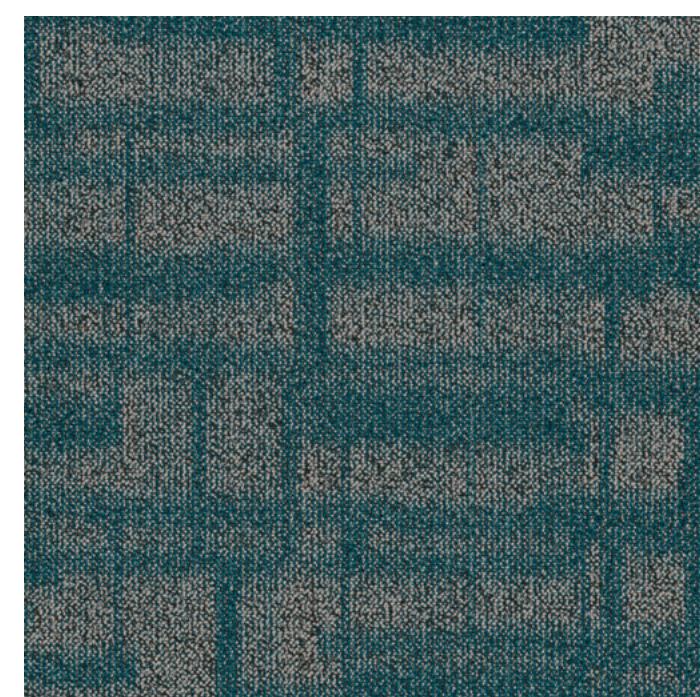
solace

48485



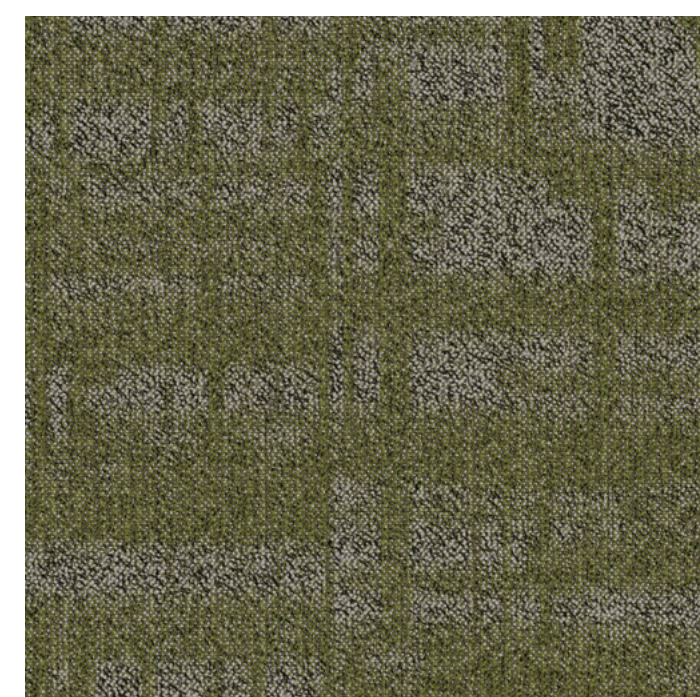
sense

48535



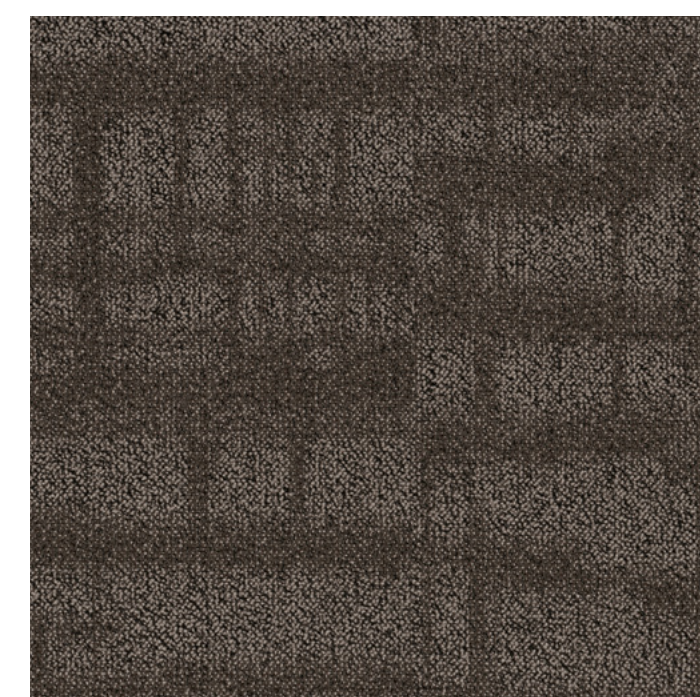
comfort

48323



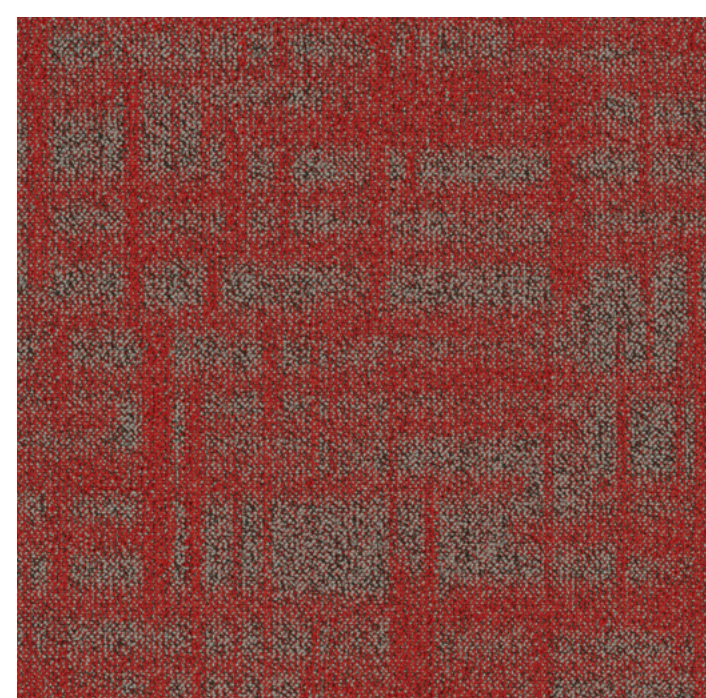
greenery

48370



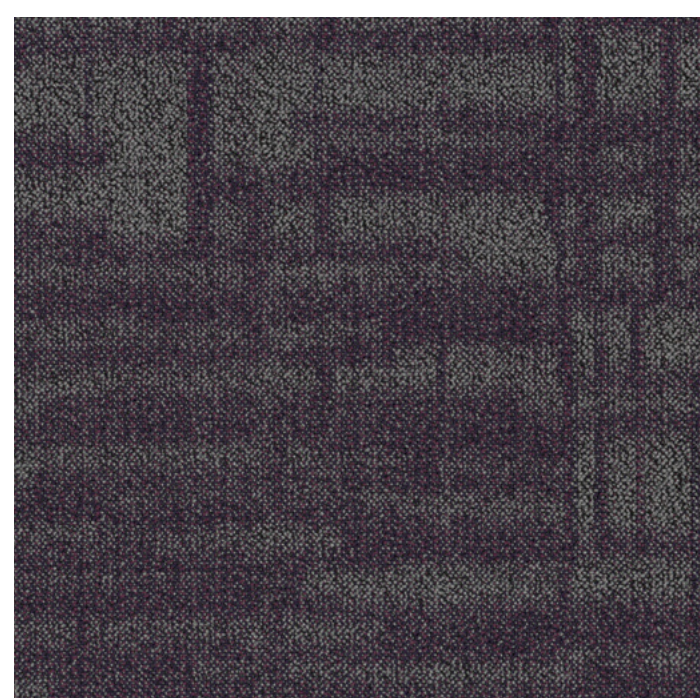
nestle

48760



fire

48856



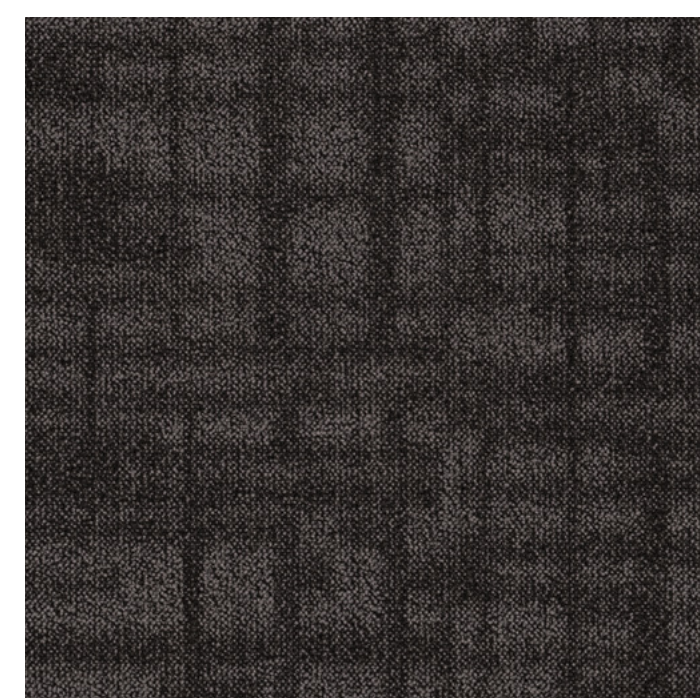
insight

48979



slate

48557



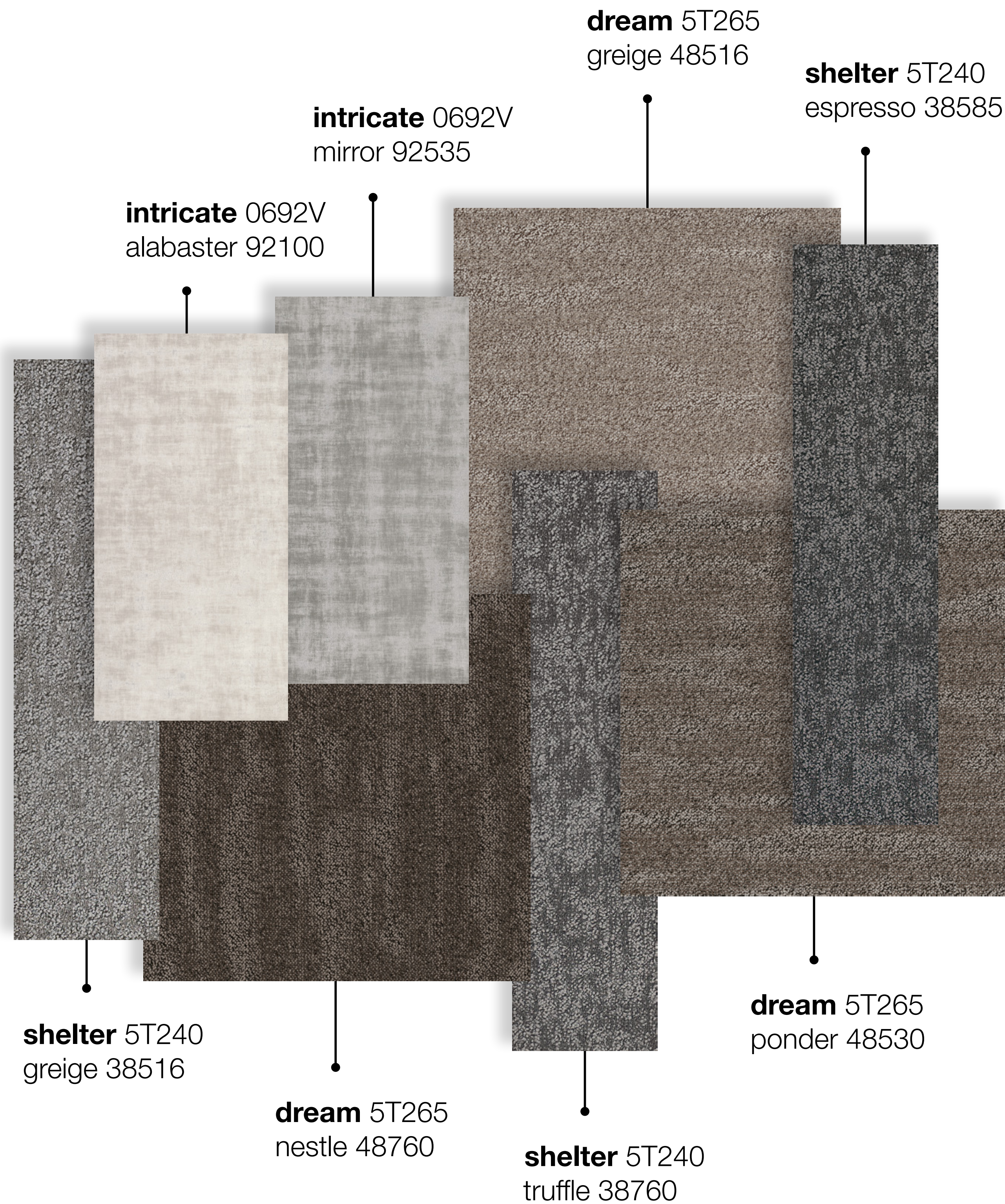
blanket

48505

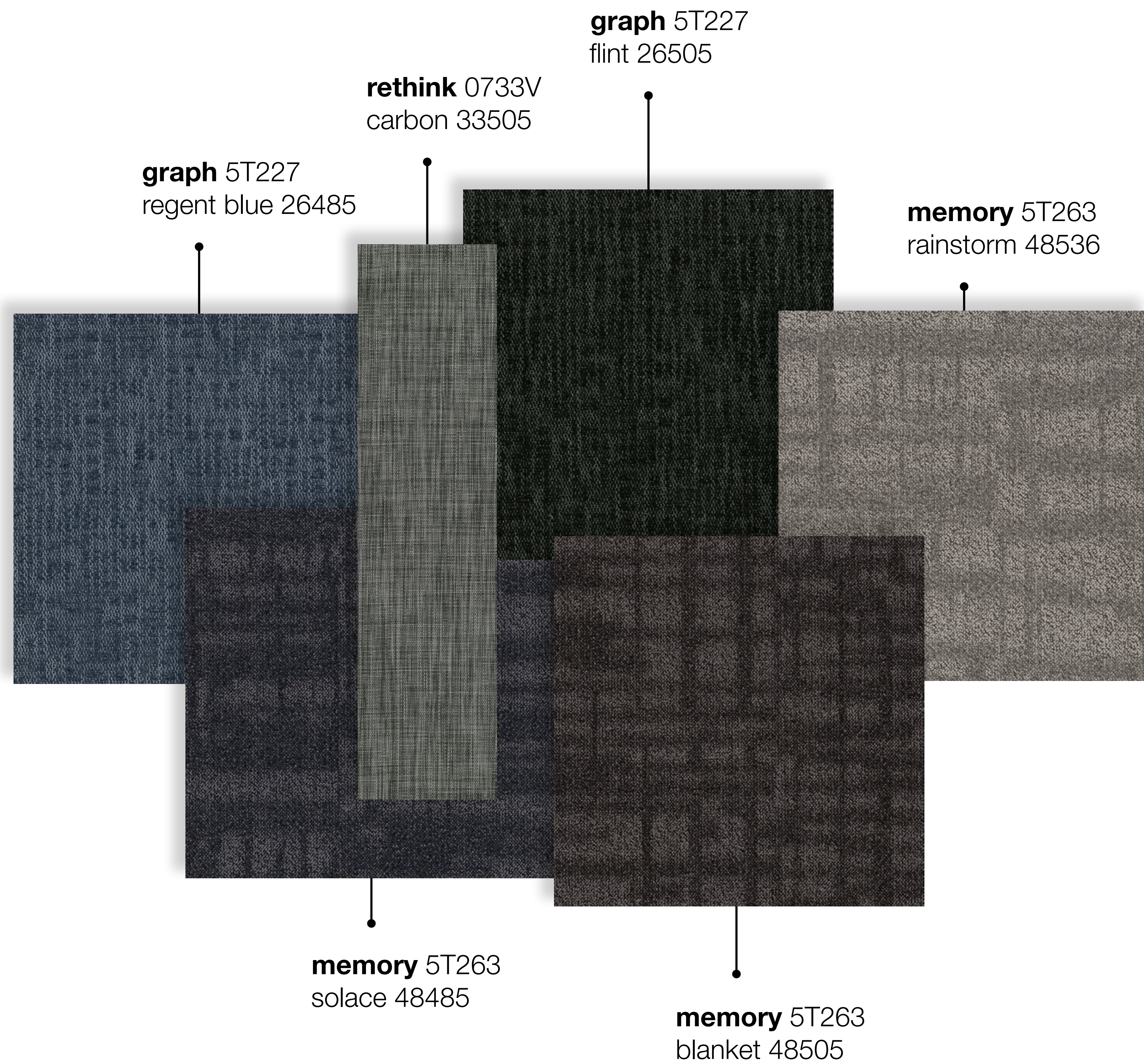


Palette Inspiration

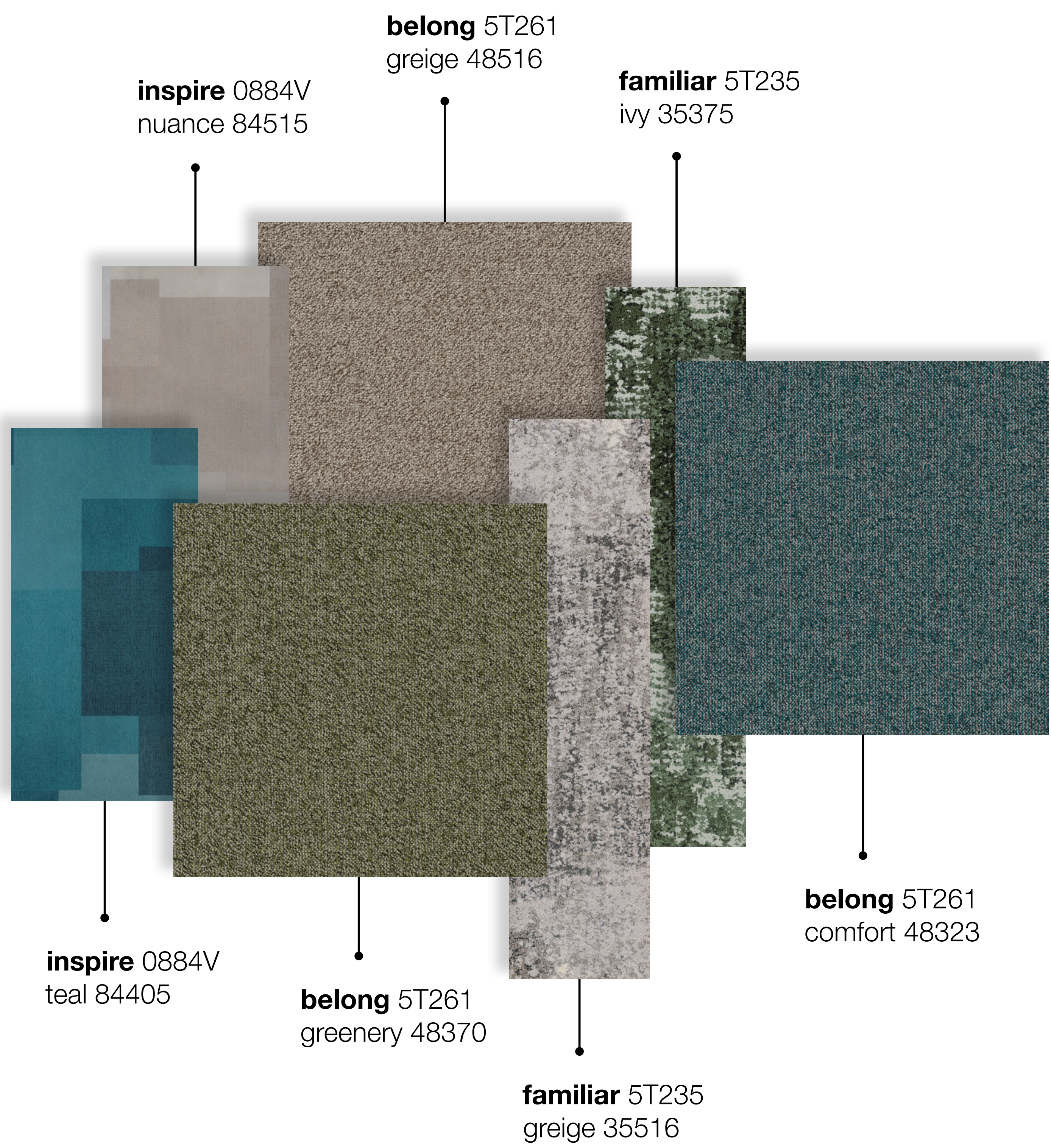
Workplace



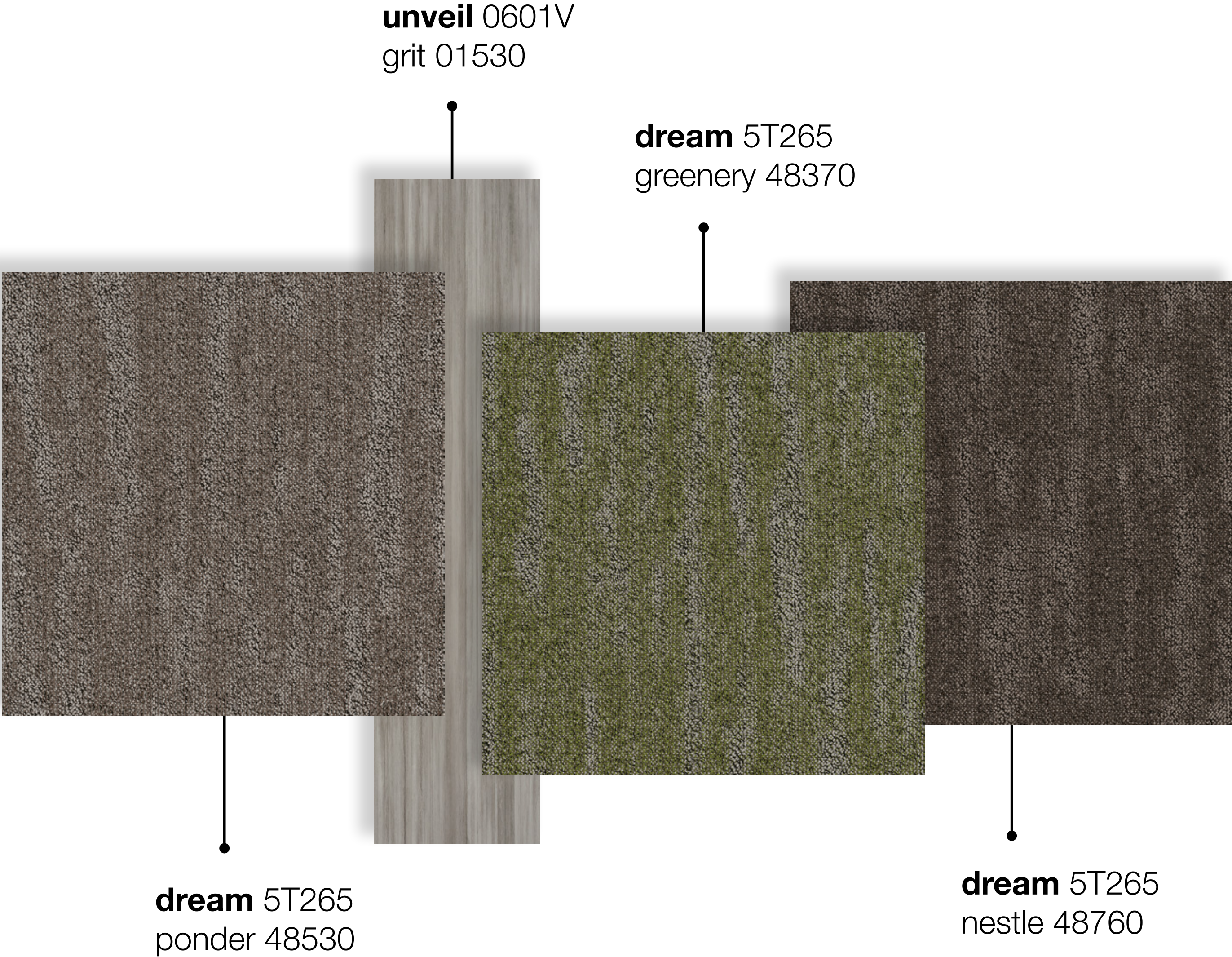
Global Workplace



Higher Education



Healthcare



unveil 0601V
grit 01530

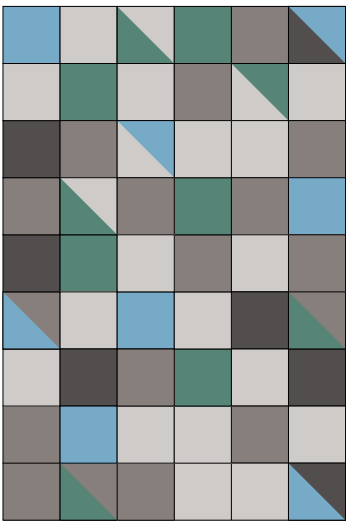
dream 5T265
greenery 48370






dream 5T265
ponder 48530

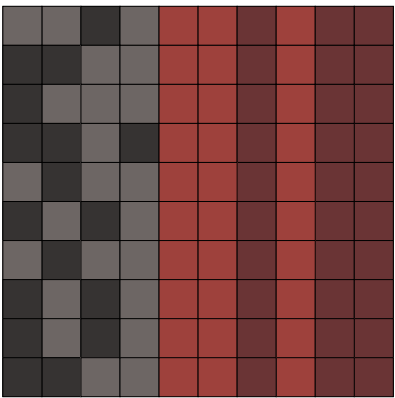
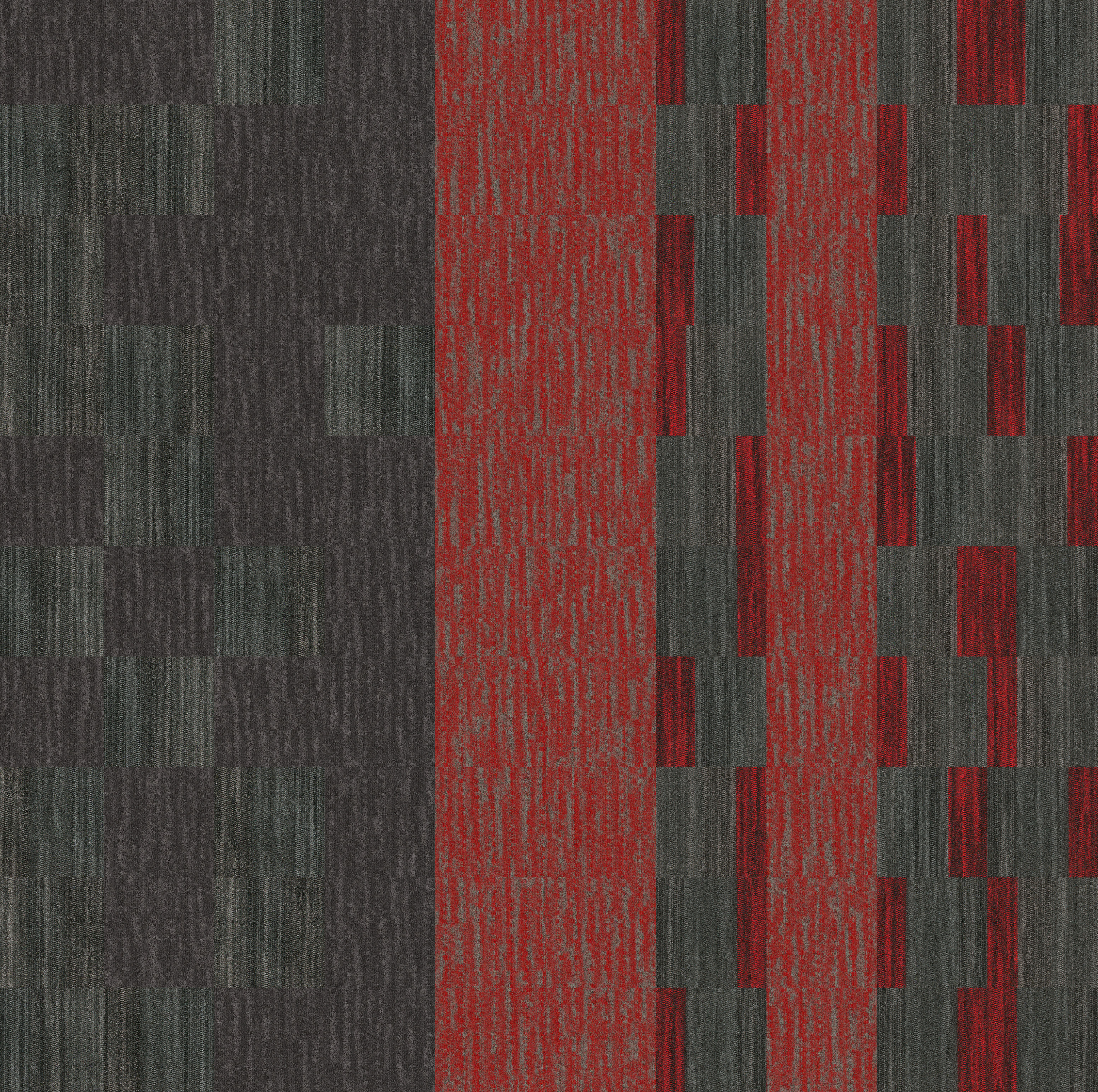
dream 5T265
nestle 48760





Installation Ideas

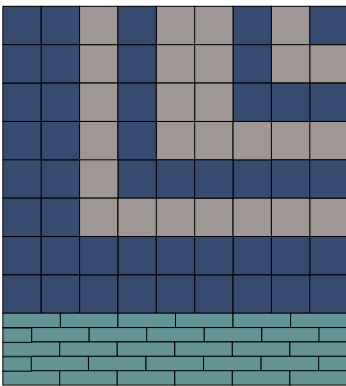
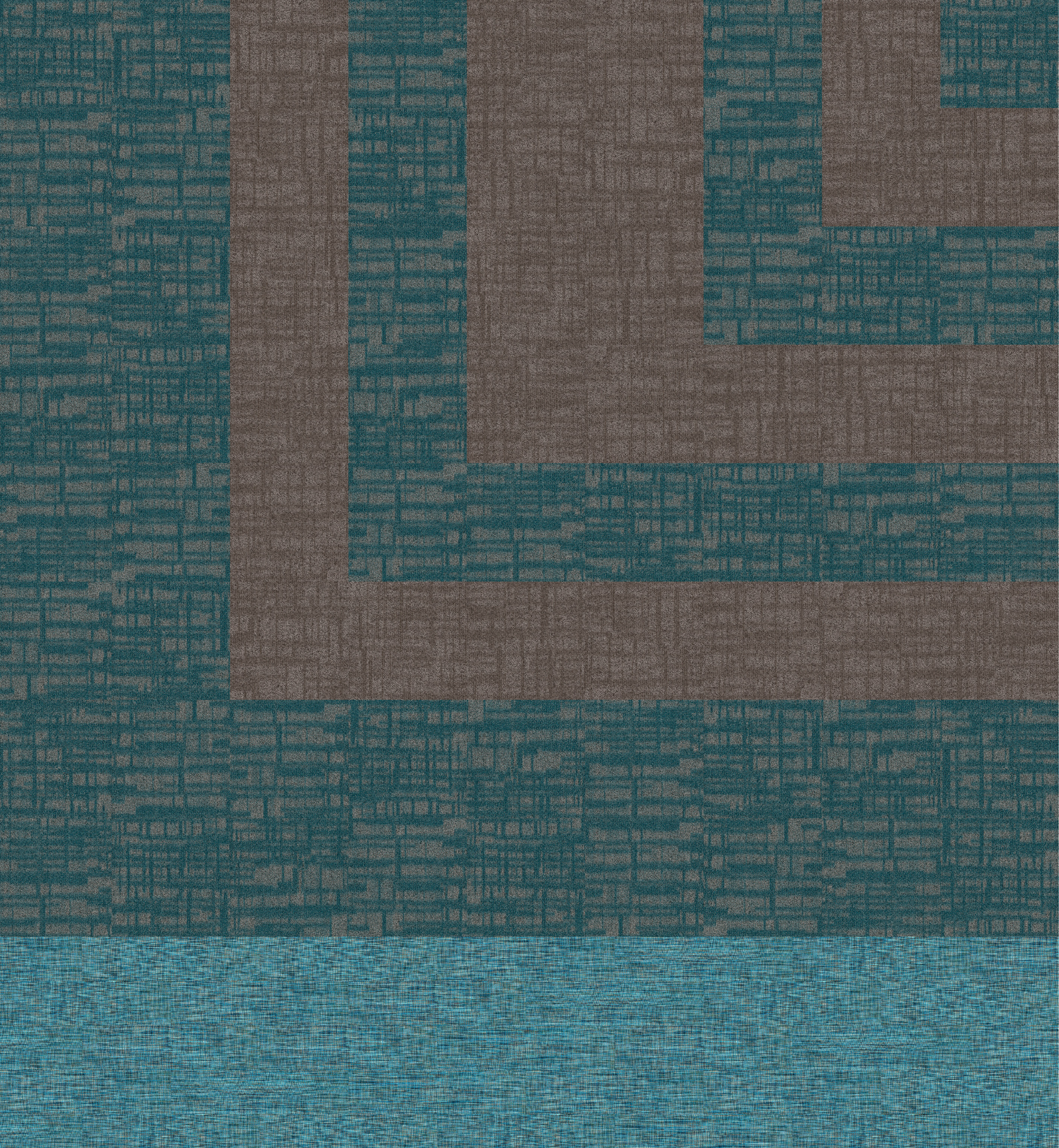
Designed to coordinate across multiple product categories and styles, Kindred offers the ability to create a myriad of installations for any application. Create moments of warmth and quiet with accent areas by pairing with a 5mm LVT. Provide a comforting field installation that makes you feel safe with a single style. Inspire moments of collaboration that establish strong relationships within a built space by pairing with different size formats of carpet tile. The possibilities are limitless.



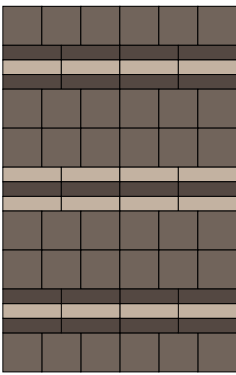
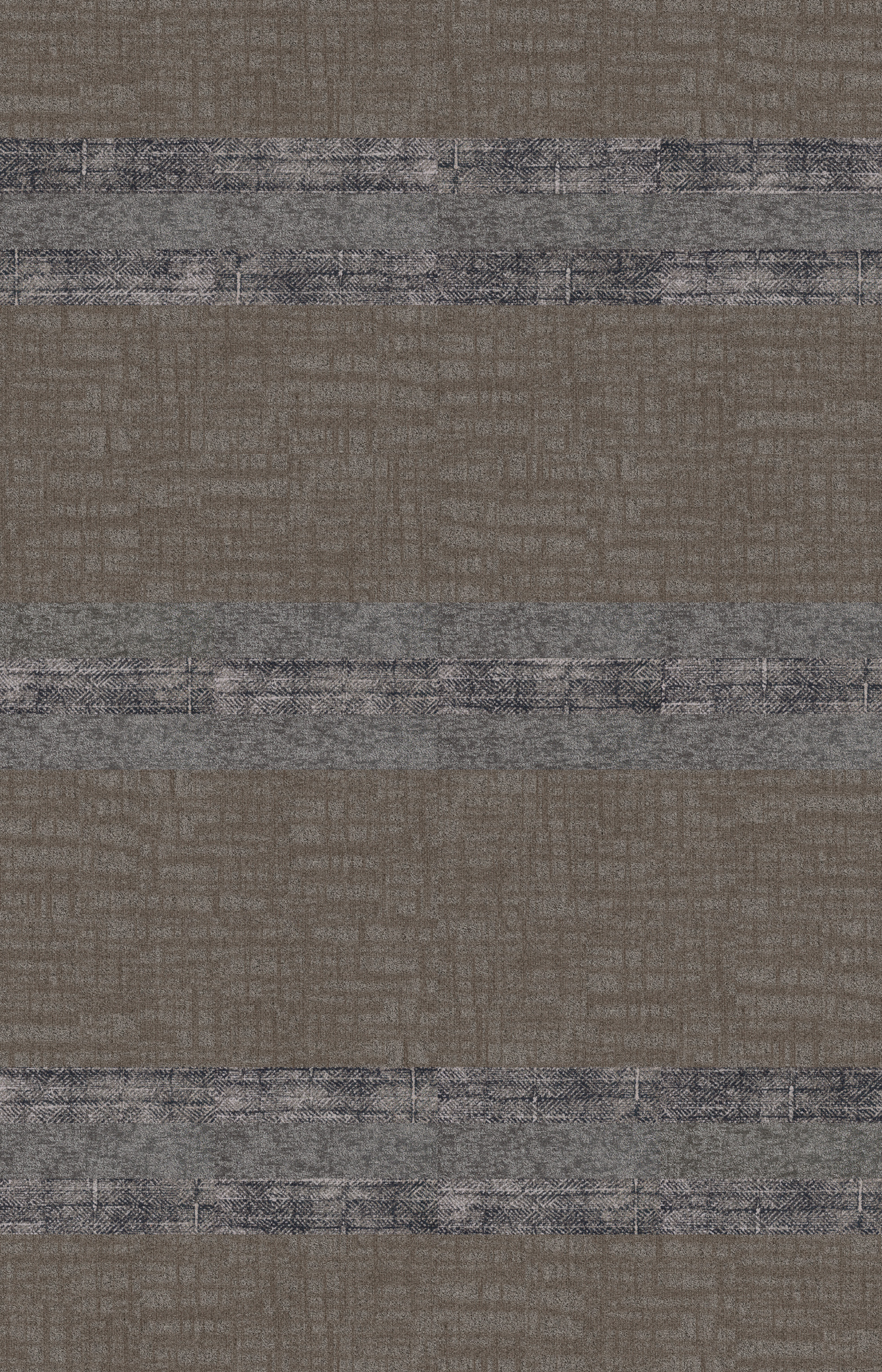
-  **belong** 5T261 in greige 48516
-  **belong** 5T261 in comfort 48323
-  **belong** 5T261 in slate 48557
-  **belong** 5T261 in rainstorm 48536
-  **belong** 5T261 in serene 48486



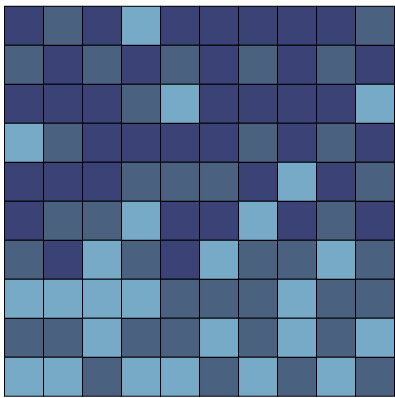
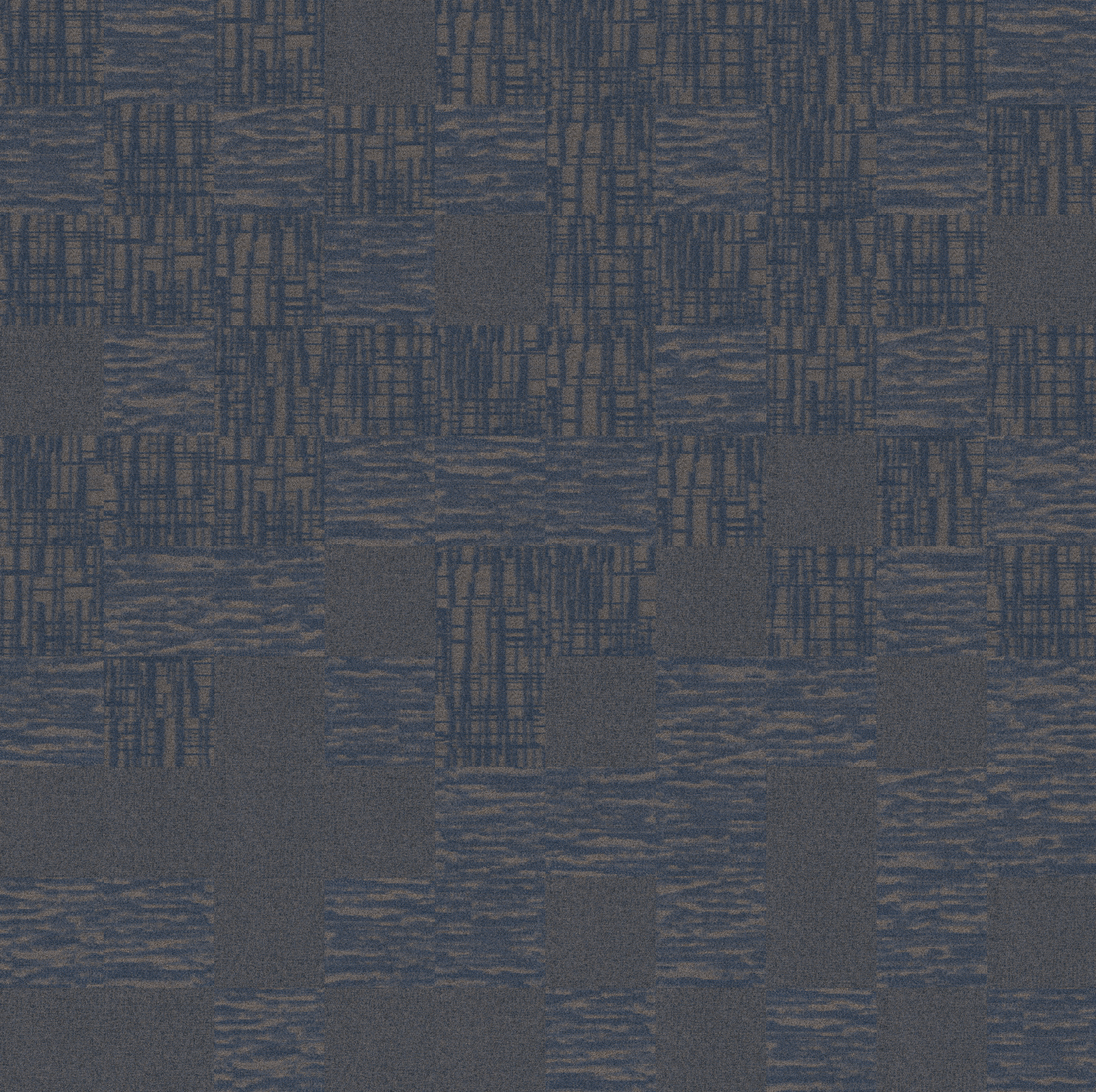
-  **sea** 5T172 in skyline 72500
-  **dream** 5T265 in slate 48557
-  **dream** 5T265 in fire 48856
-  **sea edge** 5T173 in skyline red 72502



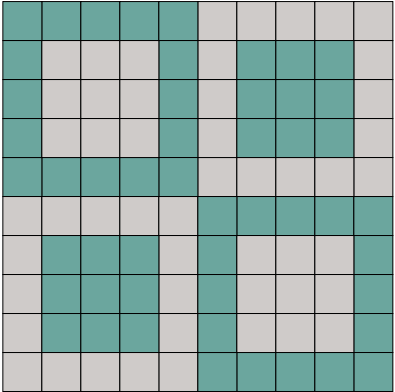
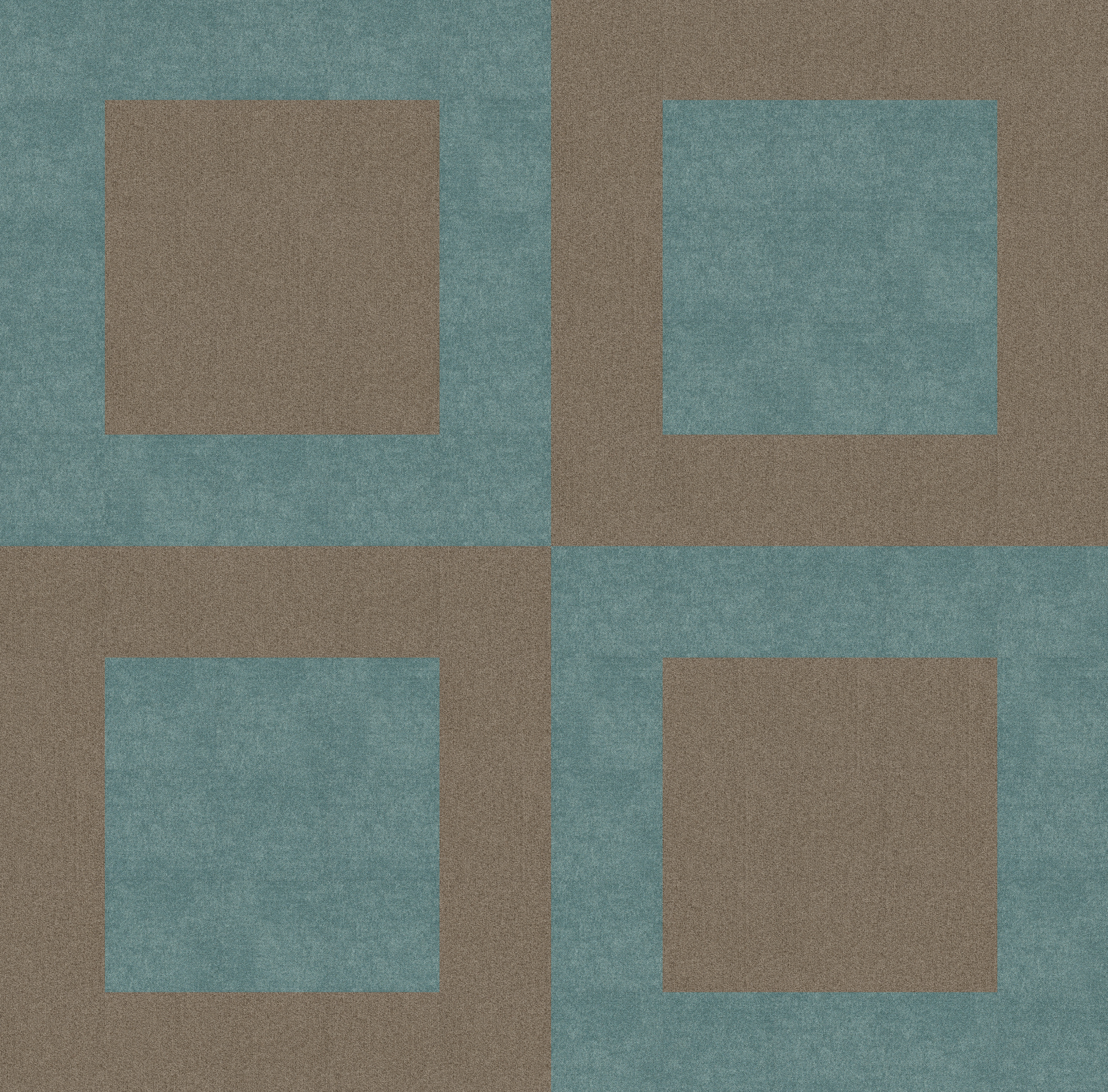
memory 5T263 in comfort 48323
memory 5T263 in hearten 48515
rethink 0733V in energy 33405



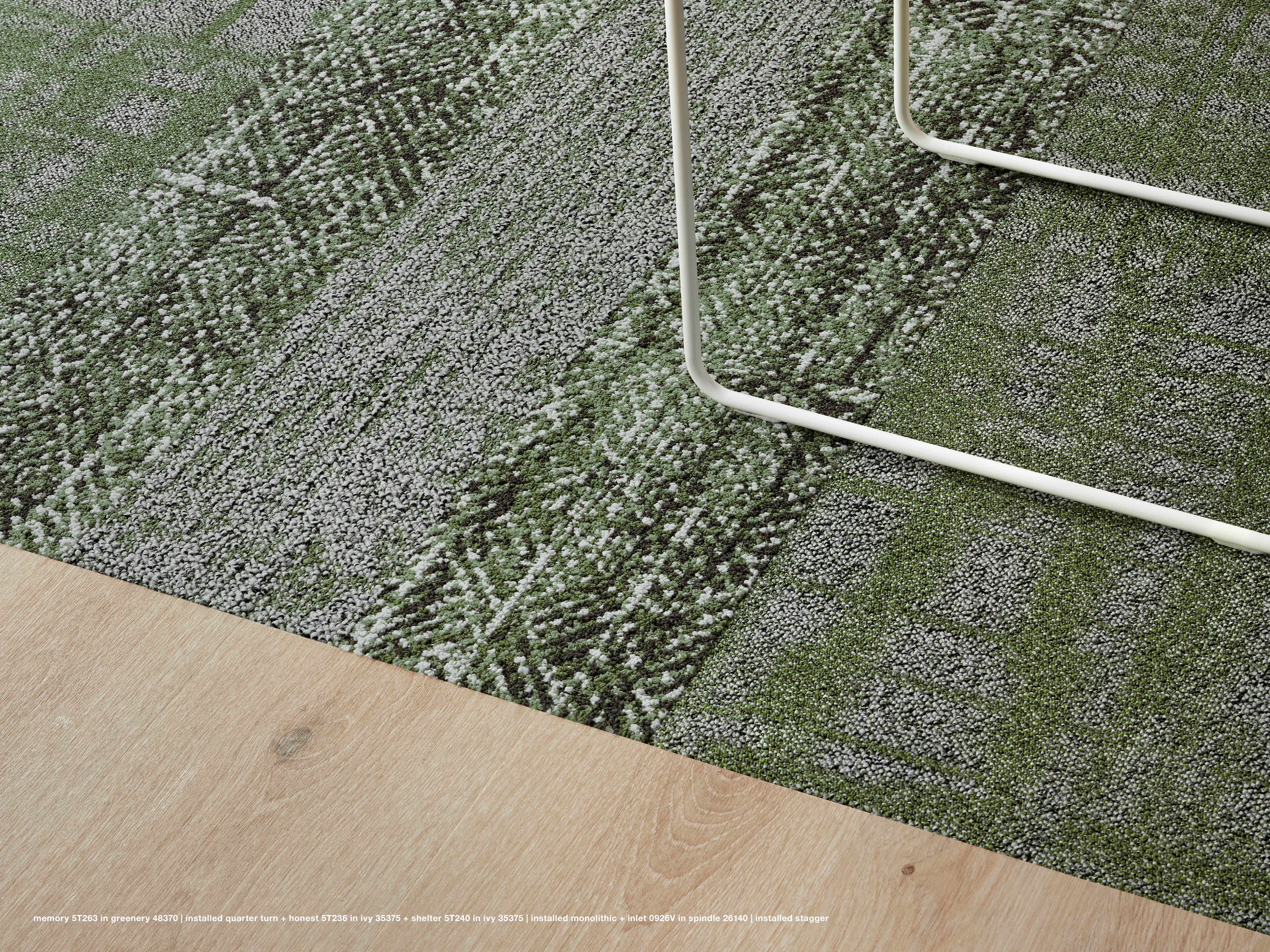
■ **memory** 5T263 in ponder 48530
■ **honest** 5T236 in truffle 35760
■ **shelter** 5T240 in truffle 38760



belong 5T261 in serene 48486
dream 5T265 in serene 48486
memory 5T263 in serene 48486



poured 5T206 in aquamarine 06327
belong 5T261in greige 48111



memory 5T263 in greenery 48370 | installed quarter turn + honest 5T236 in ivy 35375 + shelter 5T240 in ivy 35375 | installed monolithic + inlet 0926V in spindle 26140 | installed stagger